

**BS: 5837/2012. Tree Impact Assessment. – Ysgol Treferythyr Criccieth, field south of the A497, Llanystumdwy, Criccieth, Gwynedd, Wales, LL52 0RY.**



**Report Prepared By: L O'Connor BSc (Hons), MSc.**

**18/05/2021.**

## LIST OF CONTENTS

### 1. Introduction

- 1.1 Proposal.
- 1.2 Location, (FIG.1.) and Tree Preservation Order map. (FIG.2.)

### 2. The Trees and Photographic Plates.

- 2.1. Tree schedule.
- 2.2 Arboricultural Impact Assessment.
- 2.3 General Constraints Data. (RPA, Fencing and CEZ).
- 2.4 Tree Constraints Map, **FIG.TCM, APP.8.**

### 3. Arboricultural Method Statement.

- 3.1 Schedule of Works, Arboricultural monitoring and supervision.
- 3.2 Pre-Development Stage.
- 3.3 Development stage.
- 3.4 Completion.
- 3.5 The post development stage.
- 3.6 Arboriculturalist.
- 3.7 References

### Appendix

- 1. Planning flow chart.
- 2. Protective fencing, BS.5837/2012.
- 3. Cascade chart for tree quality assessment.
- 4. Arboricultural site inspection form.
- 5/6. Key's, Glossary of terms & tree abbreviations for this report.
- 7. Terram Cellular system for protection of tree roots, EUROCELL-Design, Installation Guidance Tree Root Protection. N/A in this report.
- 8. CORE GRASS Installation Guide. Example.
- 9. FIG. TCM.

## **TREE IMPACT ASESMENT. (T.I.A.).**

**Site: Ysgol Trefferthyr, Criccieth**

**Grid Ref: SH: 49219 38046**

**Date: 18/05/2021.**

### **1. Introduction:**

I have been instructed by Gwynedd Consultancy, to conduct a Tree Impact Assessment, to accompany a planning application for the proposed development of a new school at the above location. The proposal involves the construction and development of a proposed new school, associated paths, access, buildings and sports facilities.

The trees have been inspected from a ground level only (ground based Visual Tree Assessment, (VTA), trees in relation to construction – recommendations.

The trees are subject to a Gwynedd County Council, **Tree Preservation Order, ref: D2, Bron Eifion Estate, Criccieth, Gwynedd, 1984, see FIG.2.**

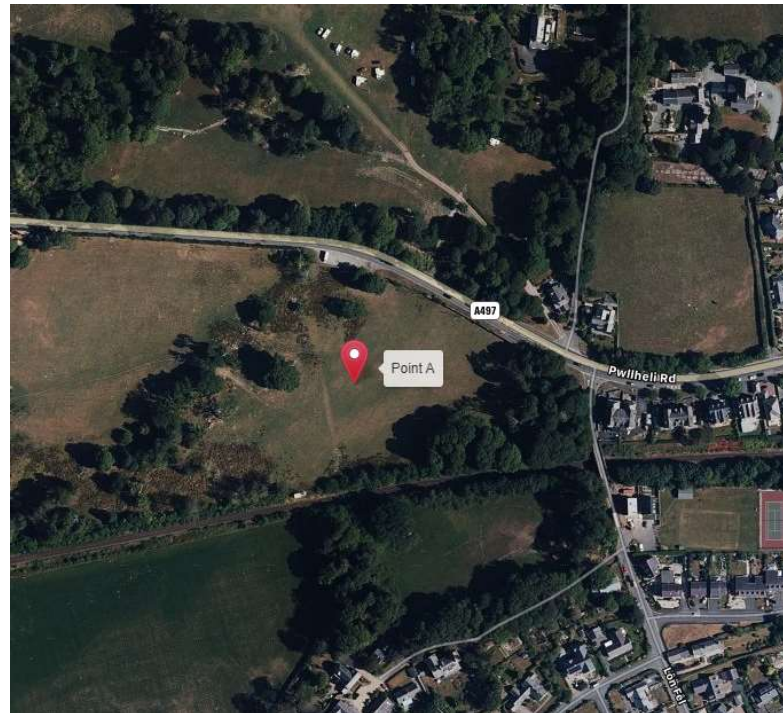
### 1.1 Proposal.

To assess the quality of trees on site that may be affected by the development or retained. To identify which stock will need to be mitigated for under BS: 5837/2012 to facilitate the proposal.

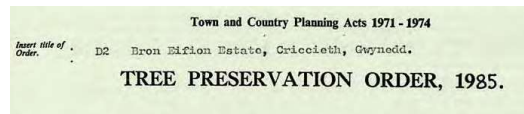
### 1.2 Location and Tree Preservation Order map. (FIG.2.)

The site is located at Grid Reference. **SH: 49219 38046**

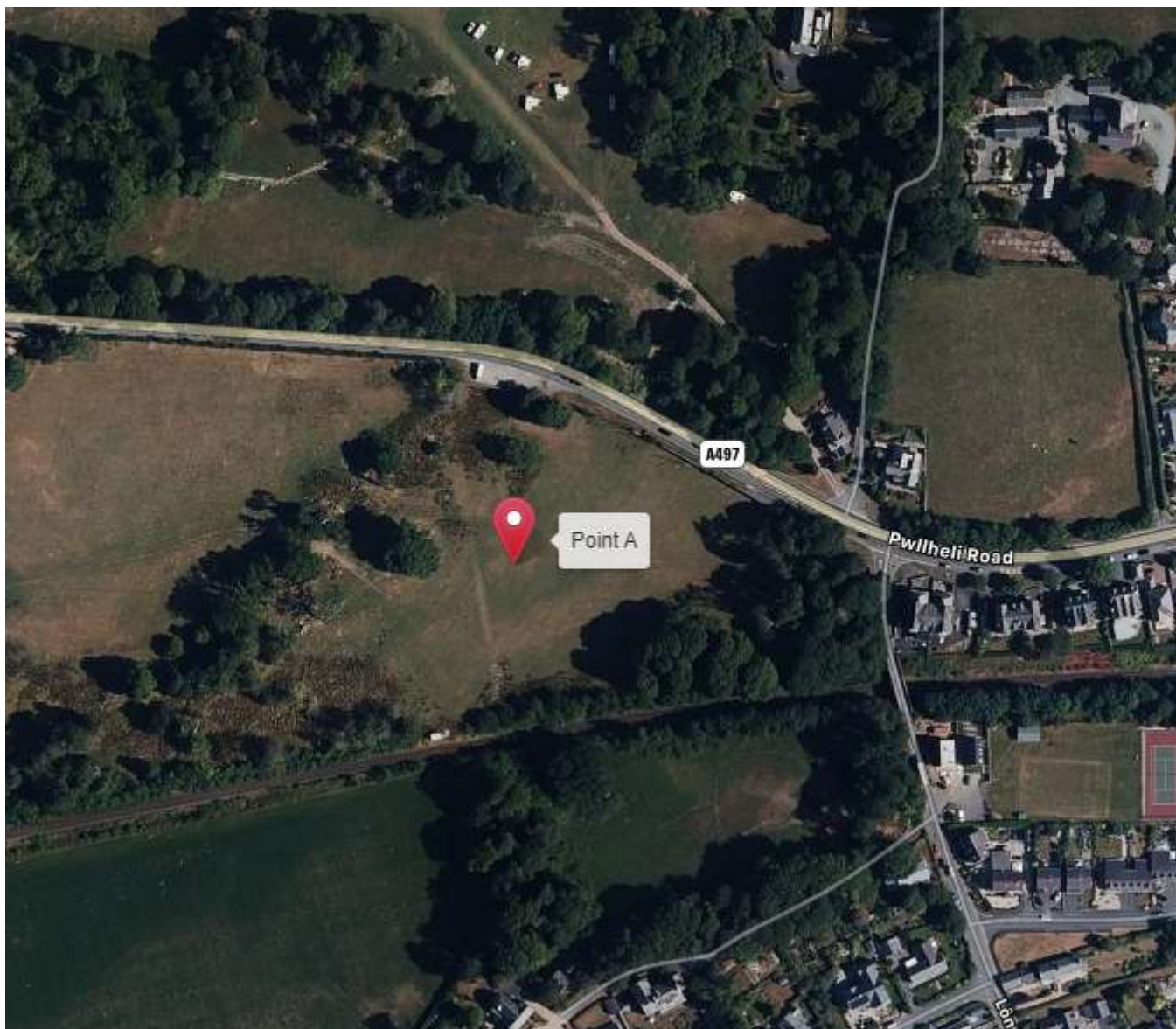
*Location map of the site. MID-POINT, FIG 1. POINT A.*



Tree Preservation Order map, ref: TPO, D5. 1985. Area shaded in yellow. FIG.2.







## 2. The trees.

The trees on site are predominantly of native broadleaved trees. The trees are located as groups and individuals. The trees on site are vary in quality and age. Trees range from over-mature and veteran specimens to young regeneration. The trees on site vary from good condition to very poor condition. The majority of the trees are confined to the south and east of the site.

The stand which comprises of individual trees T8-T41 and G1 including T57,58,T59 is of poor quality with little regeneration due to failure in stock proof fencing. The trees are of even aged and of poor diversity in terms of species structure. The trees are mature and many are approaching maturity with associated increase in failure risk. The trees have suffered from poor management and there are significant defects within many trees which will require the removal of the said trees as per tree schedule 2.1.

Although of overall poor condition the stand as a whole provides high landscape amenity and screening. The majority of trees on site have been classified as BS:5937/2012 category A & B trees. The large mature trees on the most easterly perimeter of the site are of very high amenity in the landscape as viewed as you approach Criccieth from the west. This stand creates an inviting vista as you enter the village. The protection and enhancement of this stand will continue to provide amenity and bio-diversity post construction and into the future.

The tree removals and tree impact have been kept to a minimum through sympathetic design with as many trees as possible retained as not to affect the overall stand resilience and maintaining the amenity of the stand. Planting of replacement trees is specified in schedule 2.1 and specified in the landscaping plan prepared by Lingard Farrow Styles that will accompany the planning application. This has been implemented in order to continue to enhance age structure, bio-diversity and resilience into the future.

**T4, T36: Are classified as category U trees.** These trees are need to be removed to facilitate the development. Only two trees are required to be removed on site to facilitate the development.

**T1, T2, T3, T6, T7, T8, T9, T10, T11, T12, T14, T16, T18, T19, T20, T23, T24, T25, T26 T27, T28, T30, T31, T33, T40, T41, T42, T57, T58 & G1 located to the far east of the site are to be retained, BS: 5837/2012 Category A and B trees:** -. These trees are to be protected during construction with protective fencing in accordance with BS:5837/2012. Tree works should be carried out in accordance with the schedule 2.1. These trees are protected by the **CEZ** or Construction Exclusion Zone. Following tree works as identified in the tree schedule 2.1. Tree planting should be carried out as specified in the schedule and landscaping plan. **See FIG.TCM, APP.9.** for all mitigation and tree protection.

**T13, T15, T17, T21, T22, T29, T32, T34, T35, T37, T38, T39, T59 & G1 located to the far east of the site are to be removed.** The trees have been identified for removal due to poor condition and or defects. Please see schedule 2.1 for condition details.

**T42, T43, T44, T45, T47, T48, T49, T50** Are to be retained and are situated within **G2** at the south of the site. These trees are classified as **BS: 5837/2012 Category A and B trees.** These trees are to be protected during construction with protective fencing in accordance with BS:5837/2012. Tree works should be carried out in accordance with the schedule 2.1. These trees are protected by the CEZ or Construction Exclusion Zone. **T46, T51, T52** have been identified for removal due to poor condition and or defects. Please see schedule 2.1 for condition details. Planting of replacement trees is specified in schedule 2.1 and specified in the landscaping plan prepared by Lingard Farrow Styles that will accompany the planning application. This has been implemented in order to preserve the stand amenity for the future, enhance age structure, bio-diversity and resilience into the future.

**T53, T54, T55 and T56 located to the far west of the site are to be retained.** These trees are high amenity, overmature and of veteran status and are of **C** and **A** BS:5837/2010 classification. These veteran trees are to be sectioned off around perimeter of crown, post construction with post and rail fencing outside of the rooting zone and left to their own devices. **T55** has also been identified as having a bat roost. These trees are situated some distance from the proposal and therefore will not be impacted upon and can be monitored for condition under BS:3998/2010 into the future. These trees are to be protected during construction with protective fencing in accordance with BS:5837/2012. Tree works should be carried out in accordance with the schedule 2.1. These trees are protected by the **CEZ** or Construction Exclusion Zone.



Photographic plates of identified trees.

T1



T2



**T3**



**T4,T5,T6,T7**





H1



Easterly stand of trees including G1, looking from the west. Poor condition trees to be removed as per schedule. 2.1. Retained trees to be protected in accordance with BS:5837/2012 and stand to be beaten up with additional planting to mitigate tree removals. Area includes trees T8-T41, T57, T58, T59





Southerly stand of trees including G2, looking from the north. Poor condition trees to be removed as per schedule. 2.1. Retained trees to be protected in accordance with BS:5837/2012 and stand to be beaten up with additional planting to mitigate tree removals. Include T42-T52.





T53



T53a





T54



T55





T56



## 2. Tree Schedule

Table 1: Tree Schedule BS:5837/2012.

Client: GCC Tagged: Yes Site: Ysgol Criccieth

Weather: Hot/Sunny

Date: 13/07/2020

Surveyor: Luke O'Connor, BSc (hons) MSc

Tree No	Tag No	Species	Height (M)	DBH (CM)	Crown Spread	Age Class	Condition	Recommendations	Work Priority	SULE Yrs	BS5837 m2 and r.	BS 5837 Retention category.
T1	0056	Sessile oak.  <i>Qp.</i>	6	220	N: 2 E: 4 S: 2 W: 2	OM vet	<b>Poor, coppiced.</b>  <b>Buds and twigs:</b> Good.  <b>Scaffold:</b> Good.  <b>Stem:</b> Poor, coppice on old veteran stool, cambium peeling throughout, decay on 2 x large removed old branches, boot lacing present E @0.4m  <b>Roots:</b> Poor <b>Am</b> infection and advanced decay throughout.	<b>Retain.</b>  Protective fence in accordance with BS:5837/2012. See <b>FIG.TCM.APP.9.</b>  RZ offset to the NE by irrigation ditching.  <b>Important veteran tree very old.</b>	<b>HIGH</b>	80 - 100	<b>26.4</b>  <b>2189.56</b> <b>4416.</b>	<b>A2</b>

## 2. Tree Schedule

Table 1: Tree Schedule BS:5837/2012.

Client: GCC Tagged: Yes Site: Ysgol Criccieth

Weather: Hot/Sunny

Date: 13/07/2020

Surveyor: Luke O'Connor, BSc (hons) MSc

Tree No	Tag No	Species	Height (M)	DBH (CM)	Crown Spread	Age Class	Condition	Recommendations	Work Priority	SULE Yrs	BS5837 m2 and r.	BS 5837 Retention category.
T2	0057	Sessile oak.  <i>Qp.</i>	14	123	N: 10 E: 8 S: 10 W: 10	OM vet	<p><b>Poor:</b></p> <p><b>Buds and twigs:</b> Fair.</p> <p><b>Scaffold:</b> Fair, major deadwood throughout, large tearouts with decay, hazard beam developing S@10m, water and decay in main branch junction @4m from old tearout.</p> <p><b>Stem:</b> Poor, occluded pruning wounds throughout, <i>Ganoderma</i> SE@0m and within trunk E@0m, likely major hollowing throughout lower part of stem.</p> <p><b>Roots:</b> Fair good reactive buttressing throughout, upper part of roots affected by <i>Ganoderma</i>.</p>	<p><b>Retain veteran tree.</b></p> <p>Remove large limb S with hazard beam by 6 to 7 meters to appropriate branch leader.</p> <p><b>Important veteran tree very old.</b></p> <p>Protective fence in accordance with BS:5837/2012. See <b>FIG.TCM.APP.9.</b></p>	<b>HIGH</b>	80 - 100	<p><b>14.76</b></p> <p><b>684.419</b></p> <p><b>8357</b></p>	<b>A2</b>



## 2. Tree Schedule

Table 1: Tree Schedule BS:5837/2012.

Client: GCC Tagged: Yes Site: Ysgol Criccieth

Weather: Hot/Sunny

Date: 13/07/2020

Surveyor: Luke O'Connor, BSc (hons) MSc

Tree No	Tag No	Species	Height (M)	DBH (CM)	Crown Spread	Age Class	Condition	Recommendations	Work Priority	SULE Yrs	BS5837 m2 and r.	BS 5837 Retention category.
T3	0058	Sessile oak.  <i>Qp.</i>	20	147	N: 10 E: 15 S: 12 W: 10	Om vet	<p><b>Fair:</b></p> <p><b>Buds and twigs:</b> Good.</p> <p><b>Scaffold:</b> Good, major deadwood throughout crown, large tear out E@10m and S@3m, large rubbing limbs S@7m, hazard beam developing W@8m.</p> <p><b>Stem:</b> Poor, huge cavity E from 0-2m measuring 1m across extending 1m into tree, small <i>Ganoderma</i> fruiting body present E@1m, old stone wall incorporated into stem.</p> <p><b>Roots:</b> Fair, good reactive buttressing, some compaction in rooting zone from historic livestock use.</p>	<p><b>Retain and monitor.</b></p> <p>Remove dead wood.</p> <p><b>Important veteran tree very old.</b></p> <p>Protective fence in accordance with BS:5837/2012. See <b>FIG.TCM.APP.9.</b></p>	<b>HIGH</b>	60-80	<p><b>17.64</b></p> <p><b>977.568</b></p> <p><b>1294</b></p>	<b>A2</b>

## 2. Tree Schedule

Table 1: BS:5837/2012.

Client: GCC Tagged: Yes Site: Ysgol Criccieth

Weather: Hot/Sunny

Date: 13/07/2020

Surveyor: Luke O'Connor, BSc (hons) MSc

Tree No	Tag No	Species	Height (M)	DBH (CM)	Crown Spread	Age Class	Condition	Recommendations	Work Priority	SULE Yrs	BS5837 m2 and r.	BS 5837 Retention category.
T4	0059	Alder  <i>Ag.</i>	11	104	N: 10 E: 10 S: 8 W: 10	OM-Vet	<p><b>Fair:</b></p> <p><b>Buds and twigs:</b> Fair.</p> <p><b>Scaffold:</b> Fair, major deadwood throughout, tearout on major co-dominant E from 6-8m with large longitudinal cavitation from 3-6m at least 50cm in diameter t/r ratio of co - dominant compromised.</p> <p><b>Stem:</b> Good, possible <i>am</i> infection.</p> <p><b>Roots:</b> Good, good reactive buttressing.</p>	<p>Tree to be felled to facilitate development.</p> <p>Ancient tree for species.</p> <p>Tree loss to be mitigated by additional planting as per landscaping prepared by Lingard Styles.</p>	HIGH	60 - 80	<p>12.48</p> <p>489.304</p> <p>3124</p>	U

## 2. Tree Schedule

Table 1: Tree Schedule BS:5837/2012.

Client: GCC Tagged: Yes Site: Ysgol Criccieth

Weather: Hot/Sunny

Date: 13/07/2020

Surveyor: Luke O'Connor, BSc (hons) MSc

Tree No	Tag No	Species	Height (M)	DBH (CM)	Crown Spread	Age Class	Condition	Recommendations	Work Priority	SULE Yrs	BS5837 m2 and r.	BS 5837 Retention category.
T5	0060	Sycamore  <i>Ap.</i>	14	64	N: 10 E: 5 S: 8 W: 8	M	<p><b>Poor:</b></p> <p><b>Buds and twigs:</b> Fair.</p> <p><b>Scaffold:</b> Poor, major deadwood throughout, central crown rotted out from large past tear out, large co-dominant N over parking area high possibility of failure.</p> <p><b>Stem:</b> Poor, huge cavity and decay from 0-5m t/r ratio compromised, boot lacing present. <b>Am</b> infection.</p> <p><b>Roots:</b> Poor.</p>	<p><b>FELL on condition and replant.</b></p> <p>Tree loss to be mitigated by additional planting as per landscaping prepared by Lingard Styles.</p>	HIGH	0 - 20	<p><b>7.68</b></p> <p><b>185.298</b></p> <p><b>6745</b></p>	<b>U</b>

## 2. Tree Schedule

Table 1: Tree Schedule BS:5837/2012.

Client: GCC Tagged: Yes Site: Ysgol Criccieth

Weather: Hot/Sunny

Date: 13/07/2020

Surveyor: Luke O'Connor, BSc (hons) MSc

Tree No	Tag No	Species	Height (M)	DBH (CM)	Crown Spread	Age Class	Condition	Recommendations	Work Priority	SULE Yrs	BS5837 m2 and r.	BS 5837 Retention category.
T6	0061	Sycamore  <i>Ap.</i>	18	64	N: 8 E: 6 S: 8 W: 5	M	<b>Good.</b>  <b>Buds and twigs:</b> Fair, some signs of minor crown dieback.  <b>Scaffold:</b> Good.  <b>Stem:</b> Good, minor cavities throughout stem from old pruning wounds.  <b>Roots:</b> Good.	<b>Retain.</b>  <b>NWR.</b>  Protective fence in accordance with BS:5837/2012. See <b>FIG.TCM.APP.9.</b>	<b>NWR</b>	60-80	<b>7.68</b>  <b>185.298</b> <b>6745</b>	<b>A2</b>

## 2. Tree Schedule

Table 1: Tree Schedule BS:5837/2012.

Client: GCC Tagged: Yes Site: Ysgol Criccieth

Weather: Hot/Sunny

Date: 13/07/2020

Surveyor: Luke O'Connor, BSc (hons) MSc

Tree No	Tag No	Species	Height (M)	DBH (CM)	Crown Spread	Age Class	Condition	Recommendations	Work Priority	SULE Yrs	BS5837 m2 and r.	BS 5837 Retention category.
T7	0062	Sycamore  <i>Ap.</i>	18	56	N: 8 E: 10 S: 10 W: 5	M	<b>Good:</b>  <b>Buds and twigs:</b> Good.  <b>Scaffold:</b> Good, dying branch W@6m.  <b>Stem:</b> Good.  <b>Roots:</b> Good.	<b>Retain.</b>  Removing dying branch W @6m.  Protective fence in accordance with BS:5837/2012. See <b>FIG.TCM.APP.9.</b>	<b>HIGH</b>	80-100	<b>6.72</b>  <b>141.869</b> <b>2977</b>	<b>A2</b>



## 2. Tree Schedule

Table 1: Tree Schedule BS:5837/2012.

Client: GCC Tagged: Yes Site: Ysgol Criccieth

Weather: Hot/Sunny

Date: 13/07/2020

Surveyor: Luke O'Connor, BSc (hons) MSc

Tree No	Tag No	Species	Height (M)	DBH (CM)	Crown Spread	Age Class	Condition	Recommendations	Work Priority	SULE Yrs	BS5837 m2 and r.	BS 5837 Retention category.
H1	N/A	Ash, <i>Fe.</i>  Sycamore, <i>Ap.</i>  Sessile Oak, <i>Qp.</i>  Willow, <i>Sc.</i>  Laurel, <i>Ln.</i>  Alder, <i>Ag.</i>	10av	10, 22,1 6,25, 32,2 5,4,8 ,30,1 6	N: E: S: W:	M	<b>Good.</b>  Buds and twigs: Good.  Scaffold: Good.  Stem: Good.  Roots: Good.	Retain.  <b>NWR.</b>  Protective fence in accordance with BS:5837/2012. See <b>FIG.TCM.APP.9.</b>	<b>NWR</b>	80-100	<b>3.6</b>  <b>40.7150</b>  <b>4079</b>	<b>A2</b>

## 2. Tree Schedule

Table 1: Tree Schedule BS:5837/2012.

Client: GCC Tagged: Yes Site: Ysgol Criccieth

Weather: Hot/Sunny

Date: 13/07/2020

Surveyor: Luke O'Connor, BSc (hons) MSc

Tree No	Tag No	Species	Height (M)	DBH (CM)	Crown Spread	Age Class	Condition	Recommendations	Work Priority	SULE Yrs	BS5837 m2 and r.	BS 5837 Retention category.
T8	0184	Sycamore  <i>Ap.</i>	25	85	N: 10 E: 15 S: 8 W: 5	M	<b>Good.</b>  <b>Buds and twigs:</b> Good.  <b>Scaffold:</b> Good, major deadwood throughout scaffold and tearouts, scaffold weighted and bias to the E.  <b>Stem:</b> Good, minor lean E.  <b>Roots:</b> Good.	<b>Retain.</b>  Remove all major deadwood and tearouts.  Crown lift to height of 3m over footpath.  Protective fence in accordance with BS:5837/2012. See <b>FIG.TCM.APP.9.</b>	<b>HIGH</b>	80-100	<b>10.2</b>  <b>326.85</b>	<b>A2</b>

## 2. Tree Schedule

Table 1: Tree Schedule BS:5837/2012.

Client: GCC Tagged: Yes Site: Ysgol Criccieth

Weather: Hot/Sunny

Date: 13/07/2020

Surveyor: Luke O'Connor, BSc (hons) MSc

Tree No	Tag No	Species	Height (M)	DBH (CM)	Crown Spread	Age Class	Condition	Recommendations	Work Priority	SULE Yrs	BS5837 m2 and r.	BS 5837 Retention category.
T9	0175	Sycamore  Ap.	26	98	N: 6 E: 6 S: 8 W: 6	M	<b>Fair.</b>  <b>Buds and twigs:</b> Fair, signs of crown dieback.  <b>Scaffold:</b> Fair, major deadwood throughout, ivy covered.  <b>Stem:</b> Fair, ivy covered, cambium peeling from 4 to 7 meters.  <b>Roots:</b> Good.	<b>Retain.</b>  Remove deadwood sever ivy.  Crown lift to 5m in height.  Monitor cambium peeling.  Protective fence in accordance with BS:5837/2012. See <b>FIG.TCM.APP.9.</b>	<b>HIGH</b>	80-100	<b>3.12</b>  <b>30.5815</b> <b>1953</b>	<b>A2</b>

## 2. Tree Schedule

Table 1: Tree Schedule BS:5837/2012.

Client: GCC Tagged: Yes Site: Ysgol Criccieth

Weather: Hot/Sunny

Date: 13/07/2020

Surveyor: Luke O'Connor, BSc (hons) MSc

Tree No	Tag No	Species	Height (M)	DBH (CM)	Crown Spread	Age Class	Condition	Recommendations	Work Priority	SULE Yrs	BS5837 m2 and r.	BS 5837 Retention category.
T10	0092	Elm.  <i>Ug.</i>	15	24	N: 2 E: 8 S: 6 W: 3	M	<b>Good.</b>  <b>Buds and twigs:</b> Good.  <b>Scaffold:</b> Fair, bias E.  <b>Stem:</b> Fair, slightly supressed.  <b>Roots:</b> Good.	<b>Retain.</b>  <b>NWR</b>  Protective fence in accordance with BS:5837/2012. See <b>FIG.TCM.APP.9.</b>	<b>NWR</b>	60 - 80	<b>2.88</b>  <b>26.0576</b> <b>2611</b>	<b>B2</b>

## 2. Tree Schedule

Table 1: Tree Schedule BS:5837/2012.

Client: GCC Tagged: Yes Site: Ysgol Criccieth Weather: Hot/Sunny Date: 13/07/2020 Surveyor: Luke O'Connor, BSc (hons) MSc

Tree No	Tag No	Species	Height (M)	DBH (CM)	Crown Spread	Age Class	Condition	Recommendations	Work Priority	SULE Yrs	BS5837 m2 and r.	BS 5837 Retention category.
T11	0186	Sycamore  <i>Ap.</i>	23	55	N: 8 E: 7 S: 4 W: 6	M	<b>Good.</b>  Buds and twigs: Good.  Scaffold: Good.  Stem: Good, minor cankering throughout.  Roots: Good.	Retain.  <b>NWR</b>  Protective fence in accordance with BS:5837/2012. See <b>FIG.TCM.APP.9.</b>	<b>NWR</b>	80-100	<b>6.6</b>  <b>136.847</b> <b>776</b>	<b>A2</b>



## 2. Tree Schedule

Table 1: Tree Schedule BS:5837/2012.

Client: GCC Tagged: Yes Site: Ysgol Criccieth

Weather: Hot/Sunny

Date: 13/07/2020

Surveyor: Luke O'Connor, BSc (hons) MSc

Tree No	Tag No	Species	Height (M)	DBH (CM)	Crown Spread	Age Class	Condition	Recommendations	Work Priority	SULE Yrs	BS5837 m2 and r.	BS 5837 Retention category.
T12	0188	Sycamore  Ap.	24	80	N: 8 E: 8 S: 5 W: 5	M	<b>Good.</b>  <b>Buds and twigs:</b> Good.  <b>Scaffold:</b> Good, ivy throughout, crown bias towards road.  <b>Stem:</b> Good, ivy covered.  <b>Roots:</b> Good.	<b>Retain.</b>  <b>NWR</b>  Protective fence in accordance with BS:5837/2012. See <b>FIG.TCM.APP.9.</b>	<b>HIGH</b>	80 - 100	<b>9.6</b>  <b>289.529</b> <b>179</b>	<b>A2</b>

## 2. Tree Schedule

Table 1: Tree Schedule BS:5837/2012.

Client: GCC Tagged: Yes Site: Ysgol Criccieth

Weather: Hot/Sunny

Date: 13/07/2020

Surveyor: Luke O'Connor, BSc (hons) MSc

Tree No	Tag No	Species	Height (M)	DBH (CM)	Crown Spread	Age Class	Condition	Recommendations	Work Priority	SULE Yrs	BS5837 m2 and r.	BS 5837 Retention category.
T13	0176	Sycamore  Ap.	25	94	N: 15 E: 10 S: 10 W: 6	M	<b>Poor.</b>  <b>Buds and twigs:</b> Good.  <b>Scaffold:</b> Good, major dead wood throughout.  <b>Stem:</b> Poor, massive basal cavity @ 0m through all aspects t/r ratio compromised major hollowing in stem.  <b>Roots:</b> Poor, potential decay in root plate.	<b>Fell on condition.</b>  Tree loss to be mitigated by additional planting as per landscaping prepared by Lingard Styles, 3 x sycamore, 303 provenance, 180cm standard with stakes and shelters. Trees to be planted in appropriate location within the eastern stand. Tree planting to improve age structure, resilience, biodiversity as well as preserving the amenity of the stand within the landscape for the future.	<b>HIGH</b>	0-10	<b>11.28</b>  <b>399.731</b> <b>2227</b>	<b>U</b>

## 2. Tree Schedule

Table 1: Tree Schedule BS:5837/2012.

Client: GCC Tagged: Yes Site: Ysgol Criccieth

Weather: Hot/Sunny

Date: 13/07/2020

Surveyor: Luke O'Connor, BSc (hons) MSc

Tree No	Tag No	Species	Height (M)	DBH (CM)	Crown Spread	Age Class	Condition	Recommendations	Work Priority	SULE Yrs	BS5837 m2 and r.	BS 5837 Retention category.
T14	0197	Sycamore  Ap.	22	60	N: 8 E: 2 S: 4 W: 6	M	<b>Fair:</b>  <b>Buds and twigs:</b> Good.  <b>Scaffold:</b> Fair, bias N towards road.  <b>Stem:</b> Fair, cavity developing W at 0m.  <b>Roots:</b> Good.	<b>Retain.</b>  <b>NWR</b>  Protective fence in accordance with BS:5837/2012. See <b>FIG.TCM.APP.9.</b>	<b>NWR</b>	80-100	<b>7.2</b>  <b>162.860</b> <b>1632</b>	<b>A2</b>

## 2. Tree Schedule

Table 1: Tree Schedule BS:5837/2012.

Client: GCC Tagged: Yes Site: Ysgol Criccieth

Weather: Hot/Sunny

Date: 13/07/2020

Surveyor: Luke O'Connor, BSc (hons) MSc

Tree No	Tag No	Species	Height (M)	DBH (CM)	Crown Spread	Age Class	Condition	Recommendations	Work Priority	SULE Yrs	BS5837 m2 and r.	BS 5837 Retention category.
T15	0173	Sycamore  Ap.	20	47	N: 8 E: 2 S: 3 W: 3	M	<p><b>Poor:</b></p> <p><b>Buds and twigs:</b> Fair.</p> <p><b>Scaffold:</b> Fair, crown bias north.</p> <p><b>Stem:</b> Poor, suppressed, huge basal cavity through all aspects, stem hollow up to 1m from Ground level t/r ratio compromised.</p> <p><b>Roots:</b> Poor likely decay in upper root plate.</p>	<p><b>Fell on condition.</b></p> <p>Tree loss to be mitigated by additional planting as per landscaping prepared by Lingard Styles, 3 x sycamore, 303 provenance, 180cm standard with stakes and shelters. Trees to be planted in appropriate location within the eastern stand. Tree planting to improve age structure, resilience, biodiversity as well as preserving the amenity of the stand within the landscape for the future.</p>	HIGH	0-10	5.64  99.9328 0567	U

## 2. Tree Schedule

Table 1: Tree Schedule BS:5837/2012.

Client: GCC Tagged: Yes Site: Ysgol Criccieth Weather: Hot/Sunny Date: 13/07/2020 Surveyor: Luke O'Connor, BSc (hons) MSc

Tree No	Tag No	Species	Height (M)	DBH (CM)	Crown Spread	Age Class	Condition	Recommendations	Work Priority	SULE Yrs	BS5837 m2 and r.	BS 5837 Retention category.
T16	0200	Sycamore  Ap.	23	47	N: 7 E: 3 S: 4 W: 5	M	Fair, slightly suppressed.  Buds and twigs: Fair, ivy covered.  Scaffold: Fair, ivy covered, hanger S @8m.  Stem: Fair, ivy covered.  Roots: Fair.	Retain.  Sever ivy and remove hanger.	HIGH	40-60	5.64  99.9328 0567	B2

## 2. Tree Schedule

Table 1: Tree Schedule BS:5837/2012.

Client: GCC Tagged: Yes Site: Ysgol Criccieth

Weather: Hot/Sunny

Date: 13/07/2020

Surveyor: Luke O'Connor, BSc (hons) MSc

Tree No	Tag No	Species	Height (M)	DBH (CM)	Crown Spread	Age Class	Condition	Recommendations	Work Priority	SULE Yrs	BS5837 m2 and r.	BS 5837 Retention category.
T17	0196	Ash.  <i>Fe.</i>	12	31	N: 12 E: 2 S: 0 W: 3	M	<b>Poor:</b>  <b>Buds and twigs:</b> Poor, ADB stage 2.  <b>Scaffold:</b> Poor major deadwood throughout.  <b>Stem:</b> Poor, suppressed, major lean towards road N, cankering, large lateral lesion along main stem of main co dominant with <i>Daldinia concentrica</i> .  <b>Roots:</b> Fair.	<b>Fell on condition.</b>  Tree loss to be mitigated by additional planting as per landscaping prepared by Lingard Styles, 3 x Scot's pine, 303 provenance, 180cm standard with stakes and shelters. Trees to be planted in appropriate location within the eastern stand. Tree planting to improve age structure, resilience, biodiversity as well as preserving the amenity of the stand within the landscape for the future.	HIGH	0-40	3.72  43.4746 1578	U

## 2. Tree Schedule

Table 1: Tree Schedule BS:5837/2012.

Client: GCC Tagged: Yes Site: Ysgol Criccieth

Weather: Hot/Sunny

Date: 13/07/2020

Surveyor: Luke O'Connor, BSc (hons) MSc

Tree No	Tag No	Species	Height (M)	DBH (CM)	Crown Spread	Age Class	Condition	Recommendations	Work Priority	SULE Yrs	BS5837 m2 and r.	BS 5837 Retention category.
T18	0024	Sycamore  <i>Ap.</i>	11	24	N: 8 E: 1 S: 0 W: 3	SM	Fair, suppressed.  Buds and twigs: Fair.  Scaffold: Fair  Stem: Fair.  Roots: Fair.	Retain.  Remove major deadwood.  Protective fence in accordance with BS:5837/2012. See FIG.TCM.APP.9.	HIGH	40-60	2.88  26.0576 2611	B3



## 2. Tree Schedule

Table 1: Tree Schedule BS:5837/2012.

Client: GCC Tagged: Yes where possible Site: Ysgol Criccieth Weather: Hot/Sunny Date: 13/07/2020 Surveyor: Luke O'Connor, BSc (hons) MSc

Tree No	Tag No	Species	Height (M)	DBH (CM)	Crown Spread	Age Class	Condition	Recommendations	Work Priority	SULE Yrs	BS5837 m2 and r.	BS 5837 Retention category.
T19	0183	Sycamore  <i>Ap.</i>	10	18	N: 8 E: 3 S: 0 W: 6	SM	<b>Poor, suppressed.</b>  <b>Buds and twigs:</b> Fair.  <b>Scaffold:</b> Fair.  <b>Stem:</b> Poor.  <b>Roots:</b> Poor.	<b>Retain.</b>  NB: Fell, adjacent small diameter sycamore x 2 marked with red dot.  Protective fence in accordance with BS:5837/2012. See <b>FIG.TCM.APP.9.</b>	<b>HIGH</b>	20-40	<b>2.16</b>  <b>14.6574</b> <b>1468</b>	<b>B2</b>

## 2. Tree Schedule

Table 1: Tree Schedule BS:5837/2012.

Client: GCC Tagged: Yes Site: Ysgol Criccieth Weather: Hot/Sunny Date: 13/07/2020 Surveyor: Luke O'Connor, BSc (hons) MSc

Tree No	Tag No	Species	Height (M)	DBH (CM)	Crown Spread	Age Class	Condition	Recommendations	Work Priority	SULE Yrs	BS5837 m2 and r.	BS 5837 Retention category.
T20	0191	Sycamore  <i>Ap.</i>	14	40	N: 5 E: 5 S: 5 W: 5	M	<b>Good:</b>  Buds and twigs: Good.  Scaffold: Good.  Stem: Good, old fence attached @1m W.  Roots: Good.	<b>Retain.</b>  Protective fence in accordance with BS:5837/2012. See <b>FIG.TCM.APP.9.</b>	<b>HIGH</b>	80-100	<b>4.8</b>  <b>72.3822</b> <b>9474</b>	<b>A2</b>

## 2. Tree Schedule

Table 1: Tree Schedule BS:5837/2012.

Client: GCC Tagged: Yes Site: Ysgol Criccieth

Weather: Hot/Sunny

Date: 13/07/2020

Surveyor: Luke O'Connor, BSc (hons) MSc

Tree No	Tag No	Species	Height (M)	DBH (CM)	Crown Spread	Age Class	Condition	Recommendations	Work Priority	SULE Yrs	BS5837 m2 and r.	BS 5837 Retention category.
T21	0189	Corsica pine. <i>Pn.</i>	24	75	N: 5 E: 3 S: 8 W: 4	M	<b>Poor:</b>  <b>Buds and twigs:</b> Poor.  <b>Scaffold:</b> Poor, major deadwood and stubs throughout.  <b>Stem:</b> Poor, major lean S.  <b>Roots:</b> Poor, root plate seems to be unstable on northerly edge.	<b>Fell on condition.</b>  Tree loss to be mitigated by additional planting as per landscaping prepared by Lingard Styles, 3 x scots pine, 303 provenance, 180cm standard with stakes and shelters. Trees to be planted in appropriate location within the eastern stand. Tree planting to improve age structure, resilience, biodiversity as well as preserving the amenity of the stand within the landscape for the future.	<b>HIGH</b>	20-40	<b>9</b> <b>254.469</b> <b>0049</b>	<b>U</b>

## 2. Tree Schedule

Table 1: Tree Schedule BS:5837/2012.

Client: GCC Tagged: Yes Site: Ysgol Criccieth

Weather: Hot/Sunny

Date: 13/07/2020

Surveyor: Luke O'Connor, BSc (hons) MSc

Tree No	Tag No	Species	Height (M)	DBH (CM)	Crown Spread	Age Class	Condition	Recommendations	Work Priority	SULE Yrs	BS5837 m2 and r.	BS 5837 Retention category.
T22	0182	Hornbeam.  <i>Cb.</i>	7	18	N: 1 E: 3 S: 3 W: 3	SM	<b>Poor, supressed</b>  <b>Buds and twigs:</b> Poor major crown dieback.  <b>Scaffold:</b> Poor.  <b>Stem:</b> Poor.  <b>Roots:</b> Fair.	<b>Fell on condition.</b>  Tree loss to be mitigated by additional planting as per landscaping prepared by Lingard Styles, 3 x hornbeam, 303 provenance, 180cm standard with stakes and shelters. Trees to be planted in appropriate location within the eastern stand. Tree planting to improve age structure, resilience, biodiversity as well as preserving the amenity of the stand within the landscape for the future.	<b>HIGH</b>	20 - 40	<b>2.16</b>  <b>14.6574</b> <b>1468</b>	<b>U</b>

## 2. Tree Schedule

Table 1: Tree Schedule BS:5837/2012.

Client: GCC Tagged: Yes Site: Ysgol Criccieth Weather: Hot/Sunny Date: 13/07/2020 Surveyor: Luke O'Connor, BSc (hons) MSc

Tree No	Tag No	Species	Height (M)	DBH (CM)	Crown Spread	Age Class	Condition	Recommendations	Work Priority	SULE Yrs	BS5837 m2 and r.	BS 5837 Retention category.
T23	0193	Sycamore  <i>Ap.</i>	14	53	N: 10 E: 6 S: 5 W: 5	M	<b>Fair:</b>  <b>Buds and twigs:</b> Good.  <b>Scaffold:</b> Fair, crown bias N.  <b>Stem:</b> Fair, lean and weighted N.  <b>Roots:</b> Good.	<b>Retain.</b>  Protective fence in accordance with BS:5837/2012. See <b>FIG.TCM.APP.9.</b>	<b>HIGH</b>	40-60	<b>6.36</b>  <b>127.076</b> <b>1662</b>	<b>A2</b>



## 2. Tree Schedule

Table 1: Tree Schedule BS:5837/2012.

Client: GCC Tagged: Yes Site: Ysgol Criccieth

Weather: Hot/Sunny

Date: 13/07/2020

Surveyor: Luke O'Connor, BSc (hons) MSc

Tree No	Tag No	Species	Height (M)	DBH (CM)	Crown Spread	Age Class	Condition	Recommendations	Work Priority	SULE Yrs	BS5837 m2 and r.	BS 5837 Retention category.
T24	0190	Sycamore  <i>Ap.</i>	15	47	N: 6 E: 4 S: 5 W: 5	M	<b>Fair.</b>  <b>Buds and twigs:</b> Fair, minor crown dieback.  <b>Scaffold:</b> Fair, major deadwood throughout.  <b>Stem:</b> Fair.  <b>Roots:</b> Fair, good reactive buttressing.	<b>Retain.</b>  Remove major deadwood.  Protective fence in accordance with BS:5837/2012. See <b>FIG.TCM.APP.9.</b>	<b>HIGH</b>	60-80	<b>5.64</b>  <b>99.9328</b> <b>0567</b>	<b>B2</b>

## 2. Tree Schedule

Table 1: Tree Schedule BS:5837/2012.

Client: GCC Tagged: Yes Site: Ysgol Criccieth

Weather: Hot/Sunny

Date: 13/07/2020

Surveyor: Luke O'Connor, BSc (hons) MSc

Tree No	Tag No	Species	Height (M)	DBH (CM)	Crown Spread	Age Class	Condition	Recommendations	Work Priority	SULE Yrs	BS5837 m2 and r.	BS 5837 Retention category.
T25	0174	Corsica pine. <i>Pn</i>	24	56	N: 5 E: 4 S: 6 W: 10	M	<b>Fair:</b>  Buds and twigs: Fair.  Scaffold: Poor, major deadwood and stubs throughout.  Stem: Fair.  Roots: Good.	<b>Retain.</b>  Remove all major deadwood and stubs.  Protective fence in accordance with BS:5837/2012. See <b>FIG.TCM.APP.9.</b>	<b>HIGH</b>	40-60	<b>6.72</b>  <b>141.869</b> <b>2977</b>	<b>B2</b>

## 2. Tree Schedule

Table 1: Tree Schedule BS:5837/2012.

Client: GCC Tagged: Yes Site: Ysgol Criccieth

Weather: Hot/Sunny

Date: 13/07/2020

Surveyor: Luke O'Connor, BSc (hons) MSc

Tree No	Tag No	Species	Height (M)	DBH (CM)	Crown Spread	Age Class	Condition	Recommendations	Work Priority	SULE Yrs	BS5837 m2 and r.	BS 5837 Retention category.
T26	0199	Sycamore  <i>Ap.</i>	21	56	N: 5 E: 5 S: 5 W: 5	M	<b>Fair:</b>  <b>Buds and twigs:</b> Fair.  <b>Scaffold:</b> Fair, major tear out on main co dominant at 10m.  <b>Stem:</b> Fair, included union at 5m good reactive wood growth NE.  <b>Roots:</b> Good.	<b>Retain.</b>  Remove tear outs.  Reduce second co dominant by 6m to take pressure of union.  Protective fence in accordance with BS:5837/2012. See <b>FIG.TCM.APP.9.</b>	<b>HIGH</b>	60-80	<b>6.72</b>  <b>141.869</b> <b>2977</b>	<b>B2</b>

## 2. Tree Schedule

Table 1: Tree Schedule BS:5837/2012.

Client: GCC Tagged: Yes Site: Ysgol Criccieth

Weather: Hot/Sunny

Date: 13/07/2020

Surveyor: Luke O'Connor, BSc (hons) MSc

Tree No	Tag No	Species	Height (M)	DBH (CM)	Crown Spread	Age Class	Condition	Recommendations	Work Priority	SULE Yrs	BS5837 m2 and r.	BS 5837 Retention category.
T27	0198	Sycamore  <i>Ap.</i>	26	57	N: 5 E: 5 S: 5 W: 5	M	<b>Good:</b>  Buds and twigs: Good.  Scaffold: Good, major hanger W @ 12m.  Stem: Good.  Roots: Good.	<b>Retain.</b>  Remove major hanger W @12m.  Protective fence in accordance with BS:5837/2012. See <b>FIG.TCM.APP.9.</b>	<b>HIGH</b>	80-100	<b>6.84</b>  <b>146.981</b> <b>2973</b>	<b>A2</b>



## 2. Tree Schedule

Table 1: Tree Schedule BS:5837/2012.

Client: GCC Tagged: Yes Site: Ysgol Criccieth

Weather: Hot/Sunny

Date: 13/07/2020

Surveyor: Luke O'Connor, BSc (hons) MSc

Tree No	Tag No	Species	Height (M)	DBH (CM)	Crown Spread	Age Class	Condition	Recommendations	Work Priority	SULE Yrs	BS5837 m2 and r.	BS 5837 Retention category.
T28	0192	Sycamore  <i>Ap.</i>	25	46	N: 3 E: 2 S: 4 W: 3	M	<b>Good:</b>  Buds and twigs: Good.  Scaffold: Good, minor deadwood.  Stem: Good.  Roots: Good.	Retain.  Remove deadwood.  Protective fence in accordance with BS:5837/2012. See <b>FIG.TCM.APP.9.</b>	<b>HIGH</b>	60-80	<b>5.52</b>  <b>95.7255</b> <b>8479</b>	<b>A2</b>

## 2. Tree Schedule

Table 1: Tree Schedule BS:5837/2012.

Client: GCC Tagged: Yes Site: Ysgol Criccieth Weather: Hot/Sunny Date: 13/07/2020 Surveyor: Luke O'Connor, BSc (hons) MSc

Tree No	Tag No	Species	Height (M)	DBH (CM)	Crown Spread	Age Class	Condition	Recommendations	Work Priority	SULE Yrs	BS5837 m2 and r.	BS 5837 Retention category.
T29	0063	Sycamore  <i>Ap</i>	24	59	N: 5 E: 5 S: 4 W: 6	M	<b>Poor:</b>  <b>Buds and twigs:</b> Good.  <b>Scaffold:</b> Good.  <b>Stem:</b> Poor, major basal cavity throughout all aspects from 0m t/r ratio compromised, hollowing up stem to 1.5m.  <b>Roots:</b> Poor, decay in upper root plate.	<b>Fell on condition.</b>  Tree loss to be mitigated by additional planting as per landscaping prepared by Lingard Styles, 3 x sycamore, 303 provenance, 180cm standard with stakes and shelters. Trees to be planted in appropriate location within the eastern stand. Tree planting to improve age structure, resilience, biodiversity as well as preserving the amenity of the stand within the landscape for the future.	<b>HIGH</b>	0-40	<b>7.08</b>  <b>157.476</b> <b>73</b>	<b>U</b>

## 2. Tree Schedule

Table 1: Tree Schedule BS:5837/2012.

Client: GCC Tagged: Yes Site: Ysgol Criccieth

Weather: Hot/Sunny

Date: 13/07/2020

Surveyor: Luke O'Connor, BSc (hons) MSc

Tree No	Tag No	Species	Height (M)	DBH (CM)	Crown Spread	Age Class	Condition	Recommendations	Work Priority	SULE Yrs	BS5837 m2 and r.	BS 5837 Retention category.
T30	0064	<i>Sycamore</i>  <i>Ap.</i>	26	43	N: 6 E: 3 S: 4 W: 3	M	<b>Good.</b>  <b>Buds and twigs:</b> Good.  <b>Scaffold:</b> Good.  <b>Stem:</b> Good, rubbing branch at 3m N with tearout, minor lean N.  <b>Roots:</b> Good.	<b>Retain.</b>  Remove rubbing branch @3m and tearout.  Protective fence in accordance with BS:5837/2012. See <b>FIG.TCM.APP.9.</b>	<b>HIGH</b>	80-100	<b>5.16</b>  <b>83.6467</b> <b>8936</b>	<b>A2</b>

## 2. Tree Schedule

Table 1: Tree Schedule BS:5837/2012.

Client: GCC Tagged: Yes Site: Ysgol Criccieth

Weather: Hot/Sunny

Date: 13/07/2020

Surveyor: Luke O'Connor, BSc (hons) MSc

Tree No	Tag No	Species	Height (M)	DBH (CM)	Crown Spread	Age Class	Condition	Recommendations	Work Priority	SULE Yrs	BS5837 m2 and r.	BS 5837 Retention category.
T31	0065	Sycamore  <i>Ap.</i>	23	42	N: 5 E: 5 S: 8 W: 8	M	<b>Good:</b>  <b>Buds and twigs:</b> Good.  <b>Scaffold:</b> Good, major deadwood throughout, dead branch N at 5m.  <b>Stem:</b> Good.  <b>Roots:</b> Good.	<b>Retain.</b>  Remove deadwood and dead branch N at 5m.  Protective fence in accordance with BS:5837/2012. See <b>FIG.TCM.APP.9.</b>	<b>HIGH</b>	60-100	<b>5.04</b>  <b>79.8014</b> <b>7995</b>	<b>A2</b>

## 2. Tree Schedule

Table 1: Tree Schedule BS:5837/2012.

Client: GCC Tagged: Yes Site: Ysgol Criccieth

Weather: Hot/Sunny

Date: 13/07/2020

Surveyor: Luke O'Connor, BSc (hons) MSc

Tree No	Tag No	Species	Height (M)	DBH (CM)	Crown Spread	Age Class	Condition	Recommendations	Work Priority	SULE Yrs	BS5837 m2 and r.	BS 5837 Retention category.
T32	0066	Norway maple.  <i>Apl</i>	23	52	N: 5 E: 4 S: 8 W: 5	M	<b>Poor:</b>  <b>Buds and twigs:</b> Good.  <b>Scaffold:</b> Poor, major deadwood and stubs throughout, major hangers @ 7 and 12m.  <b>Stem:</b> Poor, major basal hollowing through all aspects, t/r ratio compromised.  <b>Roots:</b> Poor likely decay in upper root plate.	<b>Fell on condition.</b>  Tree loss to be mitigated by additional planting as per landscaping prepared by Lingard Styles, 3 x sessile oak, 303 provenance, 180cm standard with stakes and shelters. Trees to be planted in appropriate location within the eastern stand. Tree planting to improve age structure, resilience, biodiversity as well as preserving the amenity of the stand within the landscape for the future.	<b>HIGH</b>	0-40	<b>6.24</b>  <b>122.326</b> <b>0781</b>	<b>U</b>



## 2. Tree Schedule

Table 1: Tree Schedule BS:5837/2012.

Client: GCC Tagged: Yes Site: Ysgol Criccieth

Weather: Hot/Sunny

Date: 13/07/2020

Surveyor: Luke O'Connor, BSc (hons) MSc

Tree No	Tag No	Species	Height (M)	DBH (CM)	Crown Spread	Age Class	Condition	Recommendations	Work Priority	SULE Yrs	BS5837 m2 and r.	BS 5837 Retention category.
T33	0067	Sycamore  <i>Ap.</i>	24	53	N: 4 E: 6 S: 6 W: 6	M	<b>Good:</b>  <b>Buds and twigs:</b> Good.  <b>Scaffold:</b> Good.  <b>Stem:</b> Good, minor cavity S at 2.2m.  <b>Roots:</b> Good.	<b>Retain.</b>  NB: retain small diameter ash adjacent to the S DBH 20.  Protective fence in accordance with BS:5837/2012. See <b>FIG.TCM.APP.9.</b>	<b>HIGH</b>	80-100	<b>6.36</b>  <b>127.076</b>  <b>1662</b>	<b>A2</b>

## 2. Tree Schedule

Table 1: Tree Schedule BS:5837/2012.

Client: GCC Tagged: Yes Site: Ysgol Criccieth

Weather: Hot/Sunny

Date: 13/07/2020

Surveyor: Luke O'Connor, BSc (hons) MSc

Tree No	Tag No	Species	Height (M)	DBH (CM)	Crown Spread	Age Class	Condition	Recommendations	Work Priority	SULE Yrs	BS5837 m2 and r.	BS 5837 Retention category.
T34	0068	Sycamore  Ap.	25	72	N: 5 E: 5 S: 5 W: 5	M	<b>Very Poor:</b>  <b>Buds and twigs:</b> Good.  <b>Scaffold:</b> Fair, major tear outs central crown 7m.  <b>Stem:</b> Poor, major basal cavity through all aspects, t/r ratio compromised, fire damaged E from 0-1m, major hollowing up stem from 0-2m.  <b>Roots:</b> Poor, decay in upper root plate.	<b>Fell on condition.</b>  Tree loss to be mitigated by additional planting as per landscaping prepared by Lingard Styles, 3 x sessile oak, 303 provenance, 180cm standard with stakes and shelters. Trees to be planted in appropriate location within the eastern stand. Tree planting to improve age structure, resilience, biodiversity as well as preserving the amenity of the stand within the landscape for the future.	<b>HIGH</b>	0-40	<b>8.64</b>  <b>234.518</b> <b>635</b>	<b>U</b>

## 2. Tree Schedule

Table 1: Tree Schedule BS:5837/2012.

Client: GCC Tagged: Yes where possible Site: Ysgol Criccieth Weather: Hot/Sunny Date: 13/07/2020 Surveyor: Luke O'Connor, BSc (hons) MSc

Tree No	Tag No	Species	Height (M)	DBH (CM)	Crown Spread	Age Class	Condition	Recommendations	Work Priority	SULE Yrs	BS5837 m2 and r.	BS 5837 Retention category.
T35	6900	Norway maple.  <i>Apl</i>	16	30	N: 4 E: 4 S: 4 W: 4	M	<b>Poor:</b>  <b>Buds and twigs:</b> Good.  <b>Scaffold:</b> Good.  <b>Stem:</b> Poor, major basal cavity E @ 0m with major hollowing up stem to 2m t/r ratio not compromised.  <b>Roots:</b> Poor, decay in upper root plate.	<b>Fell on condition.</b>  Tree loss to be mitigated by additional planting as per landscaping prepared by Lingard Styles, 3 x sycamore, 303 provenance, 180cm standard with stakes and shelters. Trees to be planted in appropriate location within the eastern stand. Tree planting to improve age structure, resilience, biodiversity as well as preserving the amenity of the stand within the landscape for the future.	<b>HIGH</b>	0-40	<b>3.6</b>  <b>40.7150</b> <b>4079</b>	<b>U</b>

## 2. Tree Schedule

Table 1: Tree Schedule BS:5837/2012.

Client: GCC Tagged: Yes Site: Ysgol Criccieth Weather: Hot/Sunny Date: 13/07/2020 Surveyor: Luke O'Connor, BSc (hons) MSc

Tree No	Tag No	Species	Height (M)	DBH (CM)	Crown Spread	Age Class	Condition	Recommendations	Work Priority	SULE Yrs	BS5837 m2 and r.	BS 5837 Retention category.
T36	0070	Norway maple.  <i>Apl</i>	14	60	N: 8 E: 6 S: 6 W: 8	M	<b>Fair.</b>  <b>Buds and twigs:</b> Good.  <b>Scaffold:</b> Fair, major deadwood and tear outs throughout scaffold, pruning wounds from power lines, hanger W @ 5m.  <b>Stem:</b> Fair, cavity developing N @ 1-1.5m.  <b>Roots:</b> Good, good reactive buttressing.	<b>Fell to facilitate development.</b>  Remove dead wood, tearouts and hanger W @ 5m.  Protective fence in accordance with BS:5837/2012. See <b>FIG.TCM.APP.9.</b>  Tree loss to be mitigated by additional planting as per landscaping prepared by Lingard Styles, 3 x sycamore, 303 provenance, 180cm standard with stakes and shelters. Trees to be planted in appropriate location within the eastern stand. Tree planting to improve age structure, resilience, biodiversity as well as preserving the amenity of the stand within the landscape for the future.	<b>HIGH</b>	60-80	<b>7.2</b> <b>162.860</b> <b>1632</b>	<b>U</b>

## 2. Tree Schedule

Table 1: Tree Schedule BS:5837/2012.

Client: GCC Tagged: Yes Site: Ysgol Criccieth

Weather: Hot/Sunny

Date: 13/07/2020

Surveyor: Luke O'Connor, BSc (hons) MSc

Tree No	Tag No	Species	Height (M)	DBH (CM)	Crown Spread	Age Class	Condition	Recommendations	Work Priority	SULE Yrs	BS5837 m2 and r.	BS 5837 Retention category.
T37	0071	Corsica pine. <i>Pn</i>	25	87	N: 6 E: 1 S: 6 W: 6	M	<b>Poor:</b>  <b>Buds and twigs:</b> Poor.  <b>Scaffold:</b> Poor, major dead wood, main co-dominant torn out E.  <b>Stem:</b> Fair, major stubs throughout.  <b>Roots:</b> Good.	<b>Fell on condition.</b>  N.B.: shut down required for 11kv SPEN.  Tree loss to be mitigated by additional planting as per landscaping prepared by Lingard Styles, 3 x scot's pine, 303 provenance, 180cm standard with stakes and shelters. Trees to be planted in appropriate location within the eastern stand. Tree planting to improve age structure, resilience, biodiversity as well as preserving the amenity of the stand within the landscape for the future.	<b>HIGH</b>	0-10	<b>10.44</b>  <b>342.413</b> <b>493</b>	<b>U</b>



## 2. Tree Schedule

Table 1: Tree Schedule BS:5837/2012.

Client: GCC Tagged: Yes Site: Ysgol Criccieth

Weather: Hot/Sunny

Date: 13/07/2020

Surveyor: Luke O'Connor, BSc (hons) MSc

Tree No	Tag No	Species	Height (M)	DBH (CM)	Crown Spread	Age Class	Condition	Recommendations	Work Priority	SULE Yrs	BS5837 m2 and r.	BS 5837 Retention category.
T38	0012	Sycamore  Ap.	22	60	N: 5 E: 6 S: 6 W: 5	M	<b>Poor:</b>  <b>Buds and Twigs:</b> Poor, major Crown dieback.  <b>Scaffold:</b> Poor major deadwood throughout.  <b>Stem:</b> Poor, cankering throughout, major basal cavity @ 0m t/r ratio compromised.  <b>Roots:</b> Poor, likely decay in upper root plate.	<b>Fell on condition.</b>  Tree loss to be mitigated by additional planting as per landscaping prepared by Lingard Styles, 3 x sycamore, 303 provenance, 180cm standard with stakes and shelters. Trees to be planted in appropriate location within the eastern stand. Tree planting to improve age structure, resilience, biodiversity as well as preserving the amenity of the stand within the landscape for the future.	<b>HIGH</b>	0-40	<b>7.2</b>  <b>162.860</b> <b>1632</b>	<b>U</b>

## 2. Tree Schedule

Table 1: Tree Schedule BS:5837/2012.

Client: GCC Tagged: Yes Site: Ysgol Criccieth

Weather: Hot/Sunny

Date: 13/07/2020

Surveyor: Luke O'Connor, BSc (hons) MSc

Tree No	Tag No	Species	Height (M)	DBH (CM)	Crown Spread	Age Class	Condition	Recommendations	Work Priority	SULE Yrs	BS5837 m2 and r.	BS 5837 Retention category.
T39	0073	Holly.  <i>la.</i>	16	45	N: 4 E: 4 S: 4 W: 4	M	<p><b>Poor:</b></p> <p><b>Buds and twigs:</b> Fair.</p> <p><b>Scaffold:</b> Poor, major deadwood and stubs throughout, occluding co dominants x2 E from 1m to 3m, black exudations throughout likely <b>Am</b> infection.</p> <p><b>Stem:</b> Fair.</p> <p><b>Roots:</b> Fair to poor, am infection.</p>	<p><b>Fell on condition.</b></p> <p>Tree loss to be mitigated by additional planting as per landscaping prepared by Lingard Styles, 3 x holly, 303 provenance, 180cm standard with stakes and shelters. Trees to be planted in appropriate location within the eastern stand. Tree planting to improve age structure, resilience, biodiversity as well as preserving the amenity of the stand within the landscape for the future.</p>	HIGH	40-60	<p>5.4</p> <p>91.6088</p> <p>4178</p>	U

## 2. Tree Schedule

Table 1: Tree Schedule BS:5837/2012.

Client: GCC Tagged: Yes Site: Ysgol Criccieth

Weather: Hot/Sunny

Date: 13/07/2020

Surveyor: Luke O'Connor, BSc (hons) MSc

Tree No	Tag No	Species	Height (M)	DBH (CM)	Crown Spread	Age Class	Condition	Recommendations	Work Priority	SULE Yrs	BS5837 m2 and r.	BS 5837 Retention category.
T40	0074	Sycamore  <i>Ap.</i>	23	56	N: 8 E: 8 S: 5 W: 8	M	<b>Good.</b>  Buds and twigs: Good.  Scaffold: Good.  Stem: Good.  Roots: Good.	Retain.  Protective fence in accordance with BS:5837/2012. See <b>FIG.TCM.APP.9.</b>	<b>HIGH</b>	80-100	<b>6.72</b>  <b>141.869</b> <b>2977</b>	<b>A2</b>

## 2. Tree Schedule

Table 1: Tree Schedule BS:5837/2012.

Client: GCC Tagged: Yes Site: Ysgol Criccieth

Weather: Hot/Sunny

Date: 13/07/2020

Surveyor: Luke O'Connor, BSc (hons) MSc

Tree No	Tag No	Species	Height (M)	DBH (CM)	Crown Spread	Age Class	Condition	Recommendations	Work Priority	SULE Yrs	BS5837 m2 and r.	BS 5837 Retention category.
G1	N/A	Elm x 25 <i>Ug</i> , sycamore x 11 <i>Ap</i> , holly x 1 <i>la</i> .	Elm 10, 20 av	Elm 25 av, 60 av.	N: E: S: W:	SM- M	<b>Good:</b>  <b>Buds and twigs:</b> Good.  <b>Scaffold:</b> Good, major deadwood throughout group.  <b>Stem:</b> Good.  <b>Roots:</b> Good.	<b>Retain.</b>  Remove snapped out spruce.  Remove any major deadwood from group.  Protective fence in accordance with BS:5837/2012. See <b>FIG.TCM.APP.9.</b>	<b>HIGH</b>	60 - 100	<b>7.2</b> <b>162.860</b> <b>1632</b>	<b>A2</b>

## 2. Tree Schedule

Table 1: Tree Schedule BS:5837/2012.

Client: GCC Tagged: Yes Site: Ysgol Criccieth

Weather: Hot/Sunny

Date: 13/07/2020

Surveyor: Luke O'Connor, BSc (hons) MSc

Tree No	Tag No	Species	Height (M)	DBH (CM)	Crown Spread	Age Class	Condition	Recommendations	Work Priority	SULE Yrs	BS5837 m2 and r.	BS 5837 Retention category.
T41 in G1	0075	Sycamore  <i>Ap.</i>	24	101	N: 8 E: 8 S: 16 W: 10	M	<b>Good:</b>  <b>Buds and twigs:</b> Good.  <b>Scaffold:</b> Good, dead wood throughout, major cavity developing W @ 5m, crown bias and heavily weighted over railway line, big lever arm.  <b>Stem:</b> Fair, water seepage in main branch junction @ 7m.  <b>Roots:</b> Good, good reactive buttressing.	<b>Retain.</b>  Reduce large branches W over railway line by 6 to 6 m.  Protective fence in accordance with BS:5837/2012. See <b>FIG.TCM.APP.9.</b>	<b>HIGH</b>	60-80	<b>12.12</b>  <b>461.482</b> <b>3679</b>	<b>A2</b>

## 2. Tree Schedule

Table 1: Tree Schedule BS:5837/2012.

Client: GCC Tagged: Yes Site: Ysgol Criccieth

Weather: Hot/Sunny

Date: 13/07/2020

Surveyor: Luke O'Connor, BSc (hons) MSc

Tree No	Species	Height (M)	DBH (CM)	Crown Spread	Age Class	Condition	Recommendations	Work Priority	SULE Yrs.	BS5837 m2 and r.	BS 5837 Retention category.
G2	14 x sycamore.  6 x Norway maple  1 x sessile oak  <i>Ap.</i>	20av	60av	N: 8 E: 8 S: 5 W: 8	M	<b>Good:</b>  <b>Buds and twigs:</b> Good.  <b>Scaffold:</b> Good, major deadwood throughout, minor cavities throughout group, stubs and minor hangers throughout group.  <b>Stem:</b> Good, minor cavities throughout group.  <b>Roots:</b> Good.	<b>Retain.</b>  Remove all major deadwood, stubs and hangers.  Remove dead standing trees x 2 as marked with red dot.  Small diameter elm and privet to be removed to facilitate extension of footpath adjacent to road  Protective fence on main group in accordance with BS:5837/2012. See <b>FIG.TCM.APP.9.</b>  <i>Woodland habitat walks to be Laid on terram Geo-Textile meandering between trees where required, to be agreed with incumbent arborist.</i>	<b>HIGH</b>	80-100	<b>7.2</b>  <b>162.8601</b> <b>632</b>	<b>A2</b>



## 2. Tree Schedule

Table 1: Tree Schedule BS:5837/2012.

Client: GCC Tagged: Yes Site: Ysgol Criccieth

Weather: Hot/Sunny

Date: 13/07/2020

Surveyor: Luke O'Connor, BSc (hons) MSc

Tree No	Tag No	Species	Height (M)	DBH (CM)	Crown Spread	Age Class	Condition	Recommendations	Work Priority	SULE Yrs	BS5837 m2 and r.	BS 5837 Retention category.
T42 G2	0076	Sycamore  <i>Ap.</i>	24	79	N: 6 E: 6 S: 15 W: 6	M	<b>Fair:</b>  <b>Buds and twigs:</b> Good.  <b>Scaffold:</b> Good, pruning wounds throughout scaffold from power line work, large branch with big lever arm over railway at 3m.  <b>Stem:</b> Good.  <b>Roots:</b> Fair, evidence of root plate movement in the past N.	<b>Retain.</b>  Remove large limb at 3m over railway back to stem.  NB: use arbour resin in rooting zone if required.  Protective fence in accordance with BS:5837/2012. See <b>FIG.TCM.APP.9.</b>	<b>HIGH</b>	60-80	<b>9.48</b>  <b>282.336</b> <b>1884</b>	<b>A2</b>

## 2. Tree Schedule

Table 1: Tree Schedule BS:5837/2012.

Client: GCC Tagged: Yes Site: Ysgol Criccieth

Weather: Hot/Sunny

Date: 13/07/2020

Surveyor: Luke O'Connor, BSc (hons) MSc

Tree No	Tag No	Species	Height (M)	DBH (CM)	Crown Spread	Age Class	Condition	Recommendations	Work Priority	SULE Yrs	BS5837 m2 and r.	BS 5837 Retention category.
T43	0077	Sycamore  Ap.	22	56	N: 10 E: 8 S: 6 W: 4	M	<b>Good.</b>  <b>Buds and twigs:</b> Good.  <b>Scaffold:</b> Good.  <b>Stem:</b> Good.  <b>Roots:</b> Good.	<b>Retain.</b>  Conflict tree would be required to be removed to facilitate development.  Use arbour resin to protect new edge trees in G2.  Protective fence in accordance with BS:5837/2012. See <b>FIG.TCM.APP.9.</b>	<b>HIGH</b>	60-80	<b>6.72</b>  <b>141.86</b> <b>92977</b>	<b>A2</b>

## 2. Tree Schedule

Table 1: Tree Schedule BS:5837/2012.

Client: GCC Tagged: Yes Site: Ysgol Criccieth

Weather: Hot/Sunny

Date: 13/07/2020

Surveyor: Luke O'Connor, BSc (hons) MSc

Tree No	Tag No	Species	Height (M)	DBH (CM)	Crown Spread	Age Class	Condition	Recommendations	Work Priority	SULE Yrs	BS5837 m2 and r.	BS 5837 Retention category.
T44	0078	Sycamore  <i>Ap.</i>	23	81	N: 8 E: 8 S: 10 W: 10	M	<b>Fair:</b>  <b>Buds and twigs:</b> Good.  <b>Scaffold:</b> Good, major deadwood throughout, ivy covered.  <b>Stem:</b> Fair, cavity developing NE from 0.3 to 1m, ivy covered.  <b>Roots:</b> Good, good reactive buttressing.	<b>Retain.</b>  Remove major deadwood.  Conflict tree would be required to be removed to facilitate development.  Use arbour resin to protect new edge trees in G2.  Protective fence in accordance with BS:5837/2012. See <b>FIG.TCM.APP.9.</b>	<b>HIGH</b>	80-100	<b>9.72</b>  <b>296.81</b>	<b>A2</b>

## 2. Tree Schedule

Table 1: Tree Schedule BS:5837/2012.

Client: GCC Tagged: Yes Site: Ysgol Criccieth

Weather: Hot/Sunny

Date: 13/07/2020

Surveyor: Luke O'Connor, BSc (hons) MSc

Tree No	Tag No	Species	Height (M)	DBH (CM)	Crown Spread	Age Class	Condition	Recommendations	Work Priority	SULE Yrs	BS5837 m2 and r.	BS 5837 Retention category.
T45	0079	Sycamore  <i>Ap.</i>	16	37	N: 14 E: 8 S: 0 W: 5	M	<b>Fair:</b>  <b>Buds and twigs:</b> Good.  <b>Scaffold:</b> Fair, heavily bias N.  <b>Stem:</b> Fair, heavy lean N.  <b>Roots:</b> Good.	<b>Retain.</b>  Conflict tree would be required to be removed to facilitate development.  Use arbour resin to protect new edge trees in G2.  Protective fence in accordance with BS:5837/2012. See <b>FIG.TCM.APP.9.</b>	<b>HIGH</b>	80-100	<b>4.44</b>  <b>61.93</b>	<b>B2</b>

## 2. Tree Schedule

Table 1: Tree Schedule BS:5837/2012.

Client: GCC Tagged: Yes Site: Ysgol Criccieth

Weather: Hot/Sunny

Date: 26/11/2020

Surveyor: Luke O'Connor, BSc (hons) MSc

Tree No	Tag No	Species	Height (M)	DBH (CM)	Crown Spread	Age Class	Condition	Recommendations	Work Priority	SULE Yrs	BS5837 m2 and r.	BS 5837 Retention category.
T46	0081	Sycamore  Ap.	24	65	N: 12 E: 5 S: 5 W: 7	M	<p><b>Poor:</b></p> <p><b>Buds and twigs:</b> Poor, major Crown dieback.</p> <p><b>Scaffold:</b> Poor major deadwood throughout, tearouts and storm damage, cambium peeling throughout.</p> <p><b>Stem:</b> Poor, major decay in main branch junction and inclusion, cambium peeling throughout.</p> <p><b>Roots:</b> Fair.</p>	<p><b>Fell on condition.</b></p> <p>Use arbour resin to protect new edge trees in G2.</p> <p>Protective fence in accordance with BS:5837/2012. See <b>FIG.TCM.APP.9.</b></p> <p>Tree loss to be mitigated by additional planting as per landscaping prepared by Lingard Styles, 3 x sycamore, 303 provenance, 180cm standard with stakes and shelters. Trees to be planted in appropriate location within the southern stand. Tree planting to improve age structure, resilience, biodiversity as well as preserving the amenity of the stand within the landscape for the future.</p>	HIGH	0-40	7.8  191.13	U

## 2. Tree Schedule

Table 1: Tree Schedule BS:5837/2012.

Client: GCC Tagged: Yes Site: Ysgol Criccieth

Weather: Hot/Sunny

Date: 26/11/2020

Surveyor: Luke O'Connor, BSc (hons) MSc

Tree No	Tag No	Species	Height (M)	DBH (CM)	Crown Spread	Age Class	Condition	Recommendations	Work Priority	SULE Yrs	BS5837 m2 and r.	BS 5837 Retention category.
T47	0087	Norway maple <i>Apl</i>	18	56	N: 10 E: 6 S: 3 W: 4	M	<b>Fair.</b>  <b>Buds and twigs:</b> Fair.  <b>Scaffold:</b> Poor, major deadwood stubs and tearouts throughout, Crown bias north, crossing branches N @8m, inosculation of both co-dominants @6m.  <b>Stem:</b> Fair.  <b>Roots:</b> Fair, good reactive buttressing evidence of past root lift to south.	<b>Retain.</b>  Reduce all laterals N by 4m to appropriate leader.  Reduce top height by 3m to take pressure of inosculation.  Protective fence in accordance with BS:5837/2012. See <b>FIG.TCM.APP.9.</b>	<b>HIGH</b>	40-60	<b>6.72</b>  <b>141.86</b>	<b>B2</b>



## 2. Tree Schedule

Table 1: Tree Schedule BS:5837/2012.

Client: GCC Tagged: Yes Site: Ysgol Criccieth

Weather: Hot/Sunny

Date: 26/11/2020

Surveyor: Luke O'Connor, BSc (hons) MSc

Tree No	Tag No	Species	Height (M)	DBH (CM)	Crown Spread	Age Class	Condition	Recommendations	Work Priority	SULE Yrs	BS5837 m2 and r.	BS 5837 Retention category.
T48	0088	Sycamore <i>Ap</i>	19	40	N: 7 E: 2 S: 0 W: 3	M	<b>Good:</b>  Buds and twigs: Good.  Scaffold: Good, bias N.  Stem: Good.  Roots: Good, good reactive buttressing.	<b>NWR.</b>  Retain.  Protective fence in accordance with BS:5837/2012. See <b>FIG.TCM.APP.9.</b>	<b>NWR</b>	60-80	<b>4.8</b>  <b>72.38</b>	<b>B2</b>

## 2. Tree Schedule

Table 1: Tree Schedule BS:5837/2012.

Client: GCC Tagged: Yes Site: Ysgol Criccieth

Weather: Hot/Sunny

Date: 26/11/2020

Surveyor: Luke O'Connor, BSc (hons) MSc

Tree No	Tag No	Species	Height (M)	DBH (CM)	Crown Spread	Age Class	Condition	Recommendations	Work Priority	SULE Yrs	BS5837 m2 and r.	BS 5837 Retention category.
T49	0098	Sycamore <i>Ap</i>	20	40	N: 8 E: 2 S: 3 W: 3	M	<b>Good:</b>  Buds and twigs: Good.  Scaffold: Good, bias NW.  Stem: Good.  Roots: Good, good reactive buttressing.	Retain  <b>NWR</b>  Protective fence in accordance with BS:5837/2012. See <b>FIG.TCM.APP.9.</b>	<b>NWR</b>	60-80	<b>4.8</b>  <b>72.38</b>	<b>B2</b>

## 2. Tree Schedule

Table 1: Tree Schedule BS:5837/2012.

Client: GCC Tagged: Yes Site: Ysgol Criccieth

Weather: Hot/Sunny

Date: 26/11/2020

Surveyor: Luke O'Connor, BSc (hons) MSc

Tree No	Tag No	Species	Height (M)	DBH (CM)	Crown Spread	Age Class	Condition	Recommendations	Work Priority	SULE Yrs	BS5837 m2 and r.	BS 5837 Retention category.
T50	0086	Sessile oak <i>Qp</i>	21	69	N: 10 E: 3 S: 5 W: 8	M	<b>Good:</b>  <b>Buds and twigs:</b> Good.  <b>Scaffold:</b> Good, 4 x tear outs on main co-dominant NW@6-9m.  <b>Stem:</b> Good.  <b>Roots:</b> Good, Good reactive buttressing.	<b>Retain.</b>  Clean out tear outs NW@ 6-9m.  Place grass grid to facilitate anti-compaction for forest schools' access to G2 as per <b>FIG.TCM.APP.9.</b>  Protective fence in accordance with BS:5837/2012. See <b>FIG.TCM.APP.9.</b>	<b>LOW</b>  <b>HIGH</b>	80-100	<b>8.28</b>  <b>215.38</b>	<b>A2</b>

## 2. Tree Schedule

Table 1: Tree Schedule BS:5837/2012.

Client: GCC Tagged: Yes Site: Ysgol Criccieth

Weather: Hot/Sunny

Date: 26/11/2020

Surveyor: Luke O'Connor, BSc (hons) MSc

Tree No	Tag No	Species	Height (M)	DBH (CM)	Crown Spread	Age Class	Condition	Recommendations	Work Priority	SULE Yrs	BS5837 m2 and r.	BS 5837 Retention category.
T51	0093	Norway maple <i>Apl</i>	21	71	N: 8 E: 6 S: 8 W: 10	M	<b>Poor.</b>  <b>Buds and twigs:</b> Good.  <b>Scaffold:</b> Good, inosculation at main branch junction @7m.  <b>Stem:</b> Poor, cambium peeling S from 0-3m and 1m wide, boot lacing present S@0-1.5m, Turkey tail fungus present, fire damage to S of stem  <b>Roots:</b> Poor, honey fungal infection.	<b>Fell</b> , within falling distance of railway cannot guarantee root plate integrity due to <b>Am</b> infection.  Tree loss to be mitigated by additional planting as per landscaping prepared by Lingard Styles, 3 x sessile oak, 303 provenance, 180cm standard with stakes and shelters. Trees to be planted in appropriate location within the southern stand. Tree planting to improve age structure, resilience, biodiversity as well as preserving the amenity of the stand within the landscape for the future.	<b>HIGH</b>	N/A	<b>8.52</b>  <b>228.05</b>	<b>U</b>

## 2. Tree Schedule

Table 1: Tree Schedule BS:5837/2012.

Client: GCC Tagged: Yes Site: Ysgol Criccieth

Weather: Hot/Sunny

Date: 26/11/2020

Surveyor: Luke O'Connor, BSc (hons) MSc

Tree No	Tag No	Species	Height (M)	DBH (CM)	Crown Spread	Age Class	Condition	Recommendations	Work Priority	SULE Yrs	BS5837 m2 and r.	BS 5837 Retention category.
T52	0099	Holly <i>la</i>	6	38	N: 2 E: 1 S: 1 W: 1	M	<b>Poor:</b>  <b>Buds and twigs:</b> Poor major crown dieback.  <b>Scaffold:</b> Poor, major dead wood throughout.  <b>Stem:</b> Poor, cambium peeling and honey fungal infection.  <b>Roots:</b> Poor, honey fungal infection.	<b>Fell</b> and remove cannot guarantee root plate integrity due to <b>Am</b> infection.  Tree loss to be mitigated by additional planting as per landscaping prepared by Lingard Styles, 3 x holly, 303 provenance, 180cm standard with stakes and shelters. Trees to be planted in appropriate location within the southern stand. Tree planting to improve age structure, resilience, biodiversity as well as preserving the amenity of the stand within the landscape for the future.	<b>HIGH</b>	N/A	<b>4.56</b>  <b>65.33</b>	<b>U</b>

## 2. Tree Schedule

Table 1: Tree Schedule BS:5837/2012.

Client: GCC Tagged: Yes Site: Ysgol Criccieth

Weather: Hot/Sunny

Date: 26/11/2020

Surveyor: Luke O'Connor, BSc (hons) MSc

Tree No	Tag No	Species	Height (M)	DBH (CM)	Crown Spread	Age Class	Condition	Recommendations	Work Priority	SULE Yrs	BS5837 m2 and r.	BS 5837 Retention category.
T53	0097	Oak  <i>Qp</i>	20	111	N: 14 E: 10 S: 1 W: 5	OM	<b>V.Poor:</b>  <b>Buds and twigs:</b> Poor, major crown dieback.  <b>Scaffold:</b> Poor, major dead wood stubs and tear outs throughout, major cavity W@4m and N@3.5m.  <b>Stem:</b> Poor, major tearout of co-dominant, infected with honey fungal fruiting bodies throughout, major scaring SW from 0-4m approximately 1m across.  <b>Roots:</b> Poor major honey fungal, ( <i>Am</i> ) infection cannot guarantee root plate integrity.	<b>Retain.</b>  Reduce for habitat to a to height of 10m.  Tree to be sectioned off around perimeter of crown, post construction with post and rail fencing outside of RZ.  Protective fence in accordance with BS:5837/2012. See <b>FIG.TCM.APP.9.</b>	<b>HIGH</b>	N/A	<b>13.32</b>  <b>557.39</b>	<b>C2</b>



## 2. Tree Schedule

Table 1: Tree Schedule BS:5837/2012.

Client: GCC Tagged: Yes Site: Ysgol Criccieth

Weather: Hot/Sunny

Date: 26/11/2020

Surveyor: Luke O'Connor, BSc (hons) MSc

Tree No	Tag No	Species	Height (M)	DBH (CM)	Crown Spread	Age Class	Condition	Recommendations	Work Priority	SULE Yrs	BS5837 m2 and r.	BS 5837 Retention category.
T54	0100	Oak <i>Qp</i>	12	72	N: 4 E: 8 S: 4 W: 7	OM	<p><b>Poor:</b></p> <p><b>Buds and twigs:</b> Good.</p> <p><b>Scaffold:</b> Fair, major deadwood and tear outs throughout.</p> <p><b>Stem:</b> Poor, major hollowing through all aspects at base of stem.</p> <p><b>Roots:</b> Fair, excellent reactive buttressing confident if tree stability.</p>	<p><b>Retain.</b></p> <p><b>NWR.</b></p> <p>Tree to be sectioned off around perimeter of crown, post construction with post and rail fencing outside of RZ.</p> <p>Protective fence in accordance with BS:5837/2012. See <b>FIG.TCM.APP.9.</b></p>	<b>NWR</b>	80-100	<p><b>8.64</b></p> <p><b>234.52</b></p>	<b>A2</b>

## 2. Tree Schedule

Table 1: Tree Schedule BS:5837/2012.

Client: GCC Tagged: Yes Site: Ysgol Criccieth Weather: Hot/Sunny Date: 26/11/2020 Surveyor: Luke O'Connor, BSc (hons) MSc

Tree No	Tag No	Species	Height (M)	DBH (CM)	Crown Spread	Age Class	Condition	Recommendations	Work Priority	SULE Yrs	BS5837 m2 and r.	BS 5837 Retention category.
T55	0094	Oak <i>Qp</i>	12m	143	N: 10 E: 12 S: 8 W: 5	OM Vet	<b>Fair:</b>  <b>Buds and twigs:</b> Good.  <b>Scaffold:</b> Poor, major tear outs cavities and deadwood throughout.  <b>Stem:</b> Good.  <b>Roots:</b> Good, good reactive buttressing.	<b>Retain. Bat roost identified in tree.</b>  Veteran tree leave tree to own devices for habitat and monitor.  Tree to be sectioned off around perimeter of crown, post construction with post and rail fencing outside of RZ.  Protective fence in accordance with BS:5837/2012. See <b>FIG.TCM.APP.9.</b>	<b>HIGH</b>	N/A	<b>17.16</b>  <b>925.09</b>	<b>A2</b>

## 2. Tree Schedule

Table 1: Tree Schedule BS:5837/2012.

Client: GCC Tagged: Yes Site: Ysgol Criccieth

Weather: Hot/Sunny

Date: 26/11/2020

Surveyor: Luke O'Connor, BSc (hons) MSc

Tree No	Tag No	Species	Height (M)	DBH (CM)	Crown Spread	Age Class	Condition	Recommendations	Work Priority	SULE Yrs	BS5837 m2 and r.	BS 5837 Retention category.
T56	0085	Oak <i>Qp</i>	12m	130	N: 5 E: 15 S: 8 W: 2	OM  vet	<p><b>Poor:</b></p> <p><b>Buds and twigs:</b> Good.</p> <p><b>Scaffold:</b> Fallen tree new reactive co-dominants creating new scaffold in Good condition.</p> <p><b>Stem:</b> Poor, fallen tree being supported by old lower limbs.</p> <p><b>Roots:</b> Poor, fallen tree entire root plate heaved however tree very stable due to limb anchorage in ground.</p>	<p><b>Retain.</b></p> <p><b>NWR</b> leave for habitat important veteran tree.</p> <p>Tree to be sectioned off around perimeter of crown, post construction with post and rail fencing outside of RZ.</p> <p>Protective fence in accordance with BS:5837/2012. See <b>FIG.TCM.APP.9.</b></p>	<b>NWR</b>	80-100	15.6  764.53	A2

## 2. Tree Schedule

Table 1: Tree Schedule BS:5837/2012.

Client: GCC Tagged: Yes Site: Ysgol Criccieth Weather: Hot/Sunny Date: 26/11/2020 Surveyor: Luke O'Connor, BSc (hons) MSc

Tree No	Tag No	Species	Height (M)	DBH (CM)	Crown Spread	Age Class	Condition	Recommendations	Work Priority	SULE Yrs	BS5837 m2 and r.	BS 5837 Retention category.
T57	0083	Sycamore  <i>Ap.</i>	18	60	N: 3 E: 5 S: 5 W: 4	M	<b>Fair:</b>  <b>Buds and twigs:</b> Fair.  <b>Scaffold:</b> Good, pruning wounds throughout and major deadwood S@10m.  <b>Stem:</b> Fair, occluding cavity S@1m and N in buttressing x2 from 0-0.2m.  <b>Roots:</b> Fair, good reactive buttressing.	<b>Retain.</b>  Remove major deadwood.  Remove lateral from buttress E@0m And East @2.5m to stem.  Monitor cavities.  Protective fence in accordance with BS:5837/2012. See <b>FIG.TCM.APP.9.</b>	<b>HIGH</b>  <b>HIGH</b>	40-60	<b>7.2</b>  <b>162.90</b>	<b>B2</b>

## 2. Tree Schedule

Table 1: Tree Schedule BS:5837/2012.

Client: GCC Tagged: Yes Site: Ysgol Criccieth Weather: Hot/Sunny Date: 26/11/2020 Surveyor: Luke O'Connor, BSc (hons) MSc

Tree No	Tag No	Species	Height (M)	DBH (CM)	Crown Spread	Age Class	Condition	Recommendations	Work Priority	SULE Yrs	BS5837 m2 and r.	BS 5837 Retention category.
T58	0084	Norway maple.  <i>Apl.</i>	14	26	N: 4 E: 4 S: 5 W: 5	SM	<b>Good:</b>  <b>Buds and twigs:</b> Good.  <b>Scaffold:</b> Fair, minor cavity NE@5m.  <b>Stem:</b> Fair, minor lean S.  <b>Roots:</b> Fair, good reactive buttressing.	<b>Retain.</b>  Protective fence in accordance with BS:5837/2012. See <b>FIG.TCM.APP.9.</b>	<b>NWR</b>  <b>HIGH</b>	60-100	<b>3.12</b>  <b>30.58</b>	<b>B2</b>

## 2. Tree Schedule

Table 1: Tree Schedule BS:5837/2012.

Client: GCC Tagged: Yes Site: Ysgol Criccieth

Weather: Hot/Sunny

Date: 26/11/2020

Surveyor: Luke O'Connor, BSc (hons) MSc

Tree No	Tag No	Species	Height (M)	DBH (CM)	Crown Spread	Age Class	Condition	Recommendations	Work Priority	SULE Yrs	BS5837 m2 and r.	BS 5837 Retention category.
T59	0085	Sycamore  <i>Ap.</i>	15	39	N: 5 E: 7 S: 3 W: 4	SM	<b>Poor:</b>  <b>Buds and twigs:</b> Poor.  <b>Scaffold:</b> Poor, major snap out of co-dominant with decay @10m.  <b>Stem:</b> Fair.  <b>Roots:</b> Fair.	<b>Tree to be felled.</b>  Tree loss to be mitigated by additional planting as per landscaping prepared by Lingard Styles, 1 x holly, 2 x scot's pine, 303 provenance, 180cm standard with stakes and shelters. Trees to be planted in appropriate location within the southern stand. Tree planting to improve age structure, resilience, biodiversity as well as preserving the amenity of the stand within the landscape for the future.	<b>HIGH</b>	N/A	n/a	<b>U</b>

## **2.2 Arboricultural Impact Assessment.**

Most tree roots occur in the top 60cm of the soil. Most damage to the future stability and vigour of a tree can therefore occur during the construction phase. Mature trees can survive serious damage for up to five years before they may suddenly decline resulting in usually wind-throw or death. Simple wounding to the bark or branches by insensitive construction operators can result in sources of infection and later decline. Dead or dying trees may also reduce the amenity of the site.

Careful construction techniques must be adhered to in order to lessen future impacts that may result in higher maintenance costs at a later date.

## **2.3 GENERAL CONSTRAINTS DATA**

The constraints arising from retention of trees is classified as the Construction Exclusion Zone (CEZ) and (Root Protection Area - RPA) as illustrated on the Tree Constraints Map

### **Construction Exclusion Zone (CEZ) & Root Protection Area (RPA).**

The Root Protection Area is calculated in m<sup>2</sup> and must be protected during and preserved intact after construction, in order to facilitate the healthy retention of the tree(s) concerned by retaining adequately functioning tree roots. This area is based on a radial measure from the centre of the stem of the tree, which is found by multiplying the stem diameter of the tree concerned, by a factor of twelve (or by a factor of ten when measuring basal diameter immediately above the root flare for multi-stemmed trees).

The CEZ includes all area up to and including the RPA (Root Protection Area) from the protective fencing.

During this Arboricultural Impact Assessment, the derived radial measure has been converted into the actual area to be protected, having due regard to prevailing site conditions and how these may have affected the trees, particularly in relation to factors affecting their likely rooting disposition. The means of protecting the RPA will include the installation of tree protection fencing prior to the start of work on site, including all demolition. Various activities within the RPA are prohibited (e.g. mechanical excavation, soil stripping, fire lighting, materials storage, lowering levels and creating excessive sealed surfacing), and may include the use of temporary ground protection and/or special engineering solutions where construction is proposed near to retention trees or within the RPA. This is the area above ground occupied by the crown of the tree, along with allowances for working space and if appropriate, for future growth.

Protective fencing and designation of Construction Exclusion Zones will be used to protect during the development phase.



## 2.4 Tree Constraints Map.

Any tree work that is non-emergency will require the consent of the Local Planning Authority. Any discrepancy in features or scale should be referred to the original maps supplied.

The Tree Root Protection Area (RPA) for each tree is shown behind the tree protective fencing, (red dashed line). The construction Exclusion Zones lies anywhere behind the protective fencing. The crown spread is shown as either red, green blue or grey according to their quality categorization.

**For clarity, the grading system is summarised as follows: Table 2.**

**U grade** – trees for removal, effective for less than 10 years

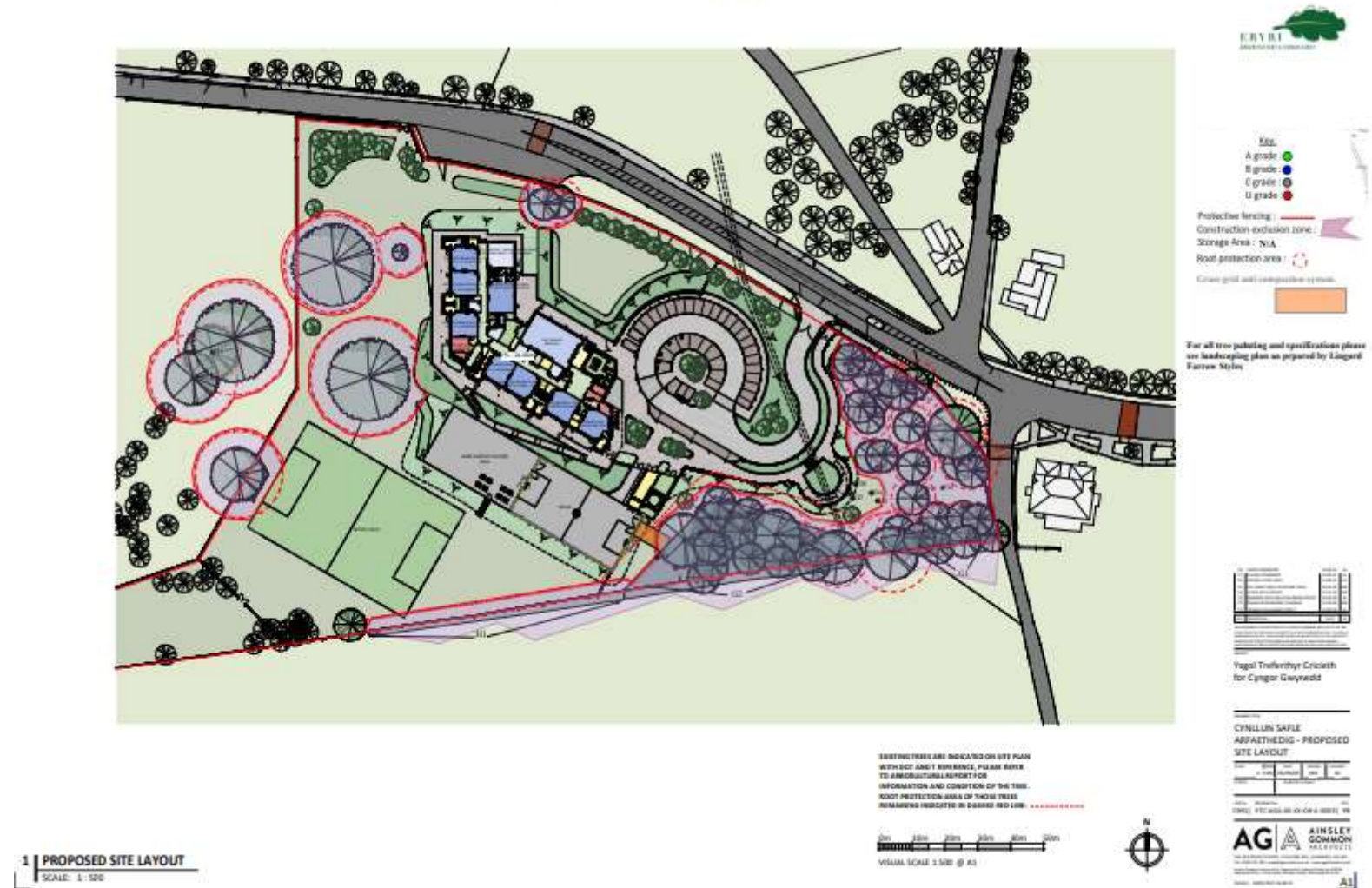
**A grade** – trees of high quality and value, effective for more than 40years

**B grade** – trees of moderate quality and value, effective for more than 20 years

**C grade** – trees of low quality and value, effective for 10 years

Tree Constraints Map. FIG.TCM. (Workable PDF attached to report see, (FIG. TCM, APP.9).

FIG.TCMAPP.9. Ysgol Trefferthyr.



### **3. Arboricultural Method Statement.**

After a site consultation between the developer, the architects, the planning department and the arborist (after approval), the following may be carried out: -

- a)** Carry out any necessary tree surgery and felling, pre-construction works, removal of hard surfaces and demolition of existing structures.
- b)** Erect protective fencing, root barriers and ground protection as per BS: 5837/2012.
- c)** Carry out any development in accordance with the Tree Impact Assessment. Any amendments must be agreed in accordance supervising Arboricultural officer and local planning tree officer.
- d)** Removal fencing and ground protection.
- e)** Final landscaping and any remedial tree surgery that may be required.

### **3.1 Schedule of works, Arboricultural monitoring and supervision.**

The schedule below may be subject to change and determined by operational constraints, any amendments must be agreed the LPA tree officer and the supervisory arborist.

### **3.2 Pre-Development Stage**

1. Carry out an on-site meeting including the Arboricultural consultant, LPA Tree Officer, client and Project manager.
2. Agree on all access to the site.
3. Discuss and agree on site compound burning and mixing areas.
4. Carry out any pruning works needed for access and agree.
5. Carry out and demolition work on site
6. Carry out any works to trees that are directly affected by the development.
7. Carry out any trees works on trees that are indirectly affected by the development.
8. Install all identified tree protection measures.
9. Carry out a site inspection by the Arboricultural project consultant.

### **3.3 The Development Stage**

1. Ensure that the site is accessible for all construction traffic
2. All construction staff to be briefed (tool box talk) by the Arboricultural consultant, as per method statement.
3. Any ground works within the RPA to be supervised by the Arboricultural consultant.
4. To carry out site monitoring every week during this stage. Timing to be discussed in with contractor and LPA Tree Officer.

### **3.4 Completion.**

Arboricultural consultant to carry out a site inspection.

### **3.5 Post Development Stage**

1. To remove all protective fencing
2. All landscaping staff to be briefed by the Arboricultural consultant and appointed landscaping officer.
3. To carry out all Landscaping

Site monitoring is in place to make sure that tree protection measures stipulated within the report are adhered to, and any amendments or issues are carried out with the correct process and ensuring notification to the LPA and the client.

Supervision within the RPA and CEZ is to ensure there is no undue damage caused to affected trees.

The LPA Tree Officer must have free access to the site to make any further recommendations and to help/advise in relation to the planning conditions.

All tree works, and clearance of scrub must be carried out in advance of the erection of the protective fencing.

All tree protection fencing must remain in situ throughout the duration of the construction work up until completion. The fencing can only be removed after agreement with LPA and after a final site inspection.

### **3.6 Arboriculturist.**

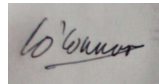
All tree contractors working near to trees must have access on site always to all relevant sections referred to in this report.

## REFERENCES

- BS 5837/2012 'Trees in Relation to Construction - Recommendations' British Standards Institute, London.
- BS 3998/2010 'Recommendations for Tree Work' British Standards Institute, London.
- 'Visual Amenity Valuation of Trees & Woodlands' 2003. The Helliwell System (Arboricultural Association publication)
- 'Guidelines for the Planning, Installation and Maintenance of Utility Services in Proximity to Trees' 1995 National Joint Utilities Group (NJUG) Publication No. 10.
- 'Availability of Sunshine' BRE - CP 75/75
- Tree Roots in the Built Environment 2006 - Dept. for Communities & Local Government (DCLG)

Mr Luke O'Connor BSc (Hons), MSc.

Sign

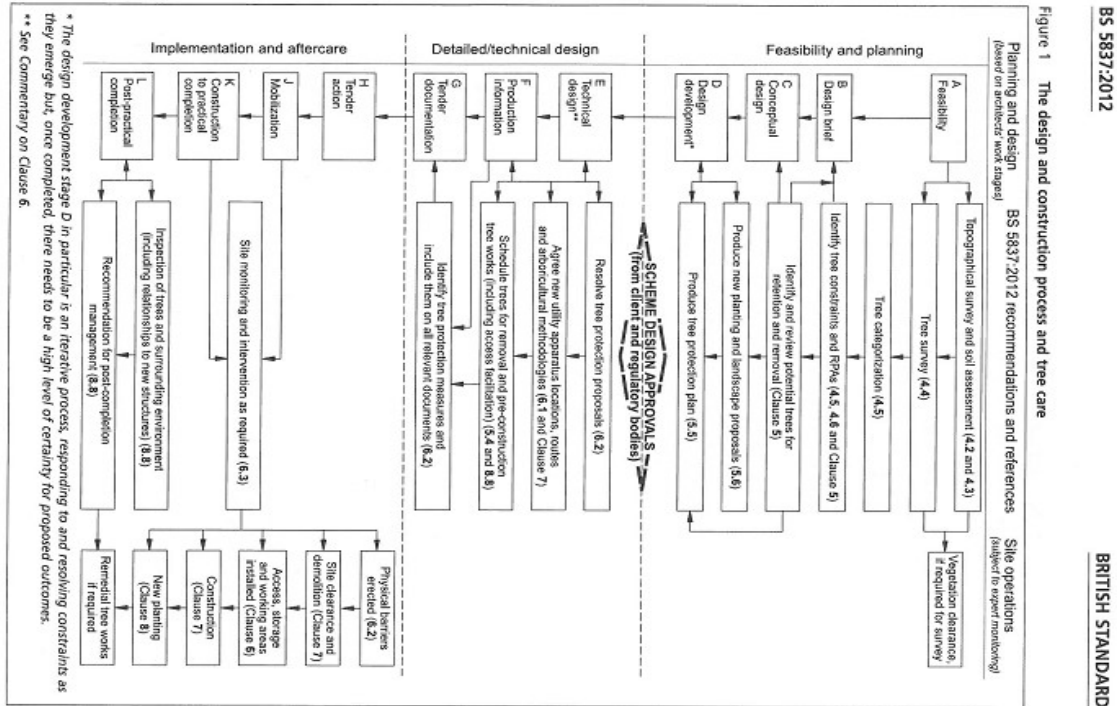


### *Disclaimer*

*The tree(s) referred to in this report are living entities and are therefore subject to natural processes. They will also be subject to changes to their environment caused by human's activities and to exceptional weather conditions. The inspection undertaken by our qualified staff relies on visual attributes of tree health and structure which can be assessed from a ground-based inspection. Hidden defects which are not readily visible may not be detected. I therefore cannot wholly guarantee the condition and safety of the trees inspected beyond what can be reasonably assessed from the procedure used. I would recommend that the trees are regularly inspected and will advise on the suitable frequency of these inspections if requested.*

## Appendix.

### 1 – Planning Flow Chart



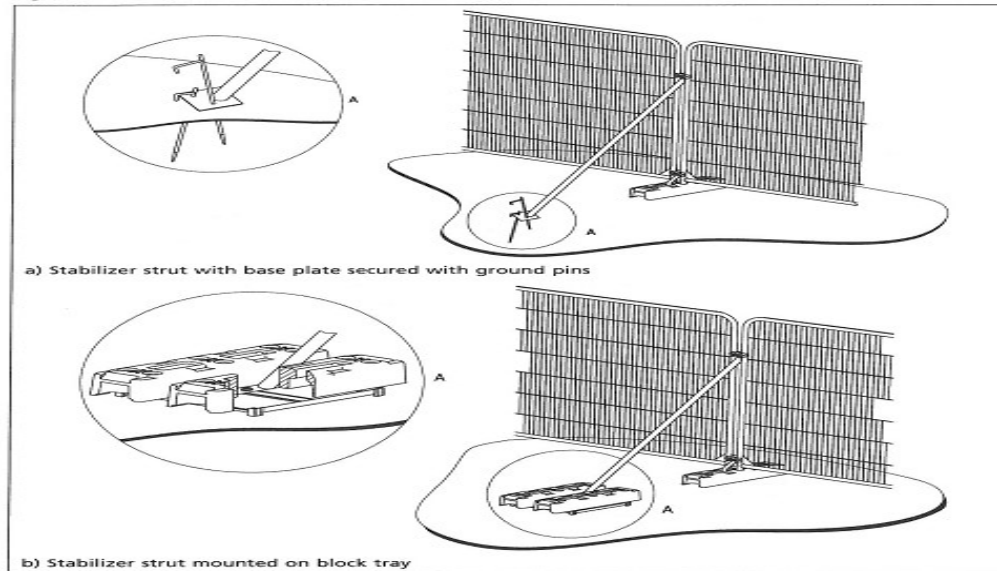


## 2. Protective fencing (BS.5837.2012)

BRITISH STANDARD

BS 5837:2012

Figure 3 Examples of above-ground stabilizing systems



### 6.2.3 Ground protection during demolition and construction

**6.2.3.1** Where construction working space or temporary construction access is justified within the RPA, this should be facilitated by a set-back in the alignment of the tree protection barrier. In such areas, suitable existing hard surfacing that is not proposed for re-use as part of the finished design should be retained to act as temporary ground protection during construction, rather than being removed during demolition. The suitability of such surfacing for this purpose should be evaluated by the project arboriculturist and an engineer as appropriate.

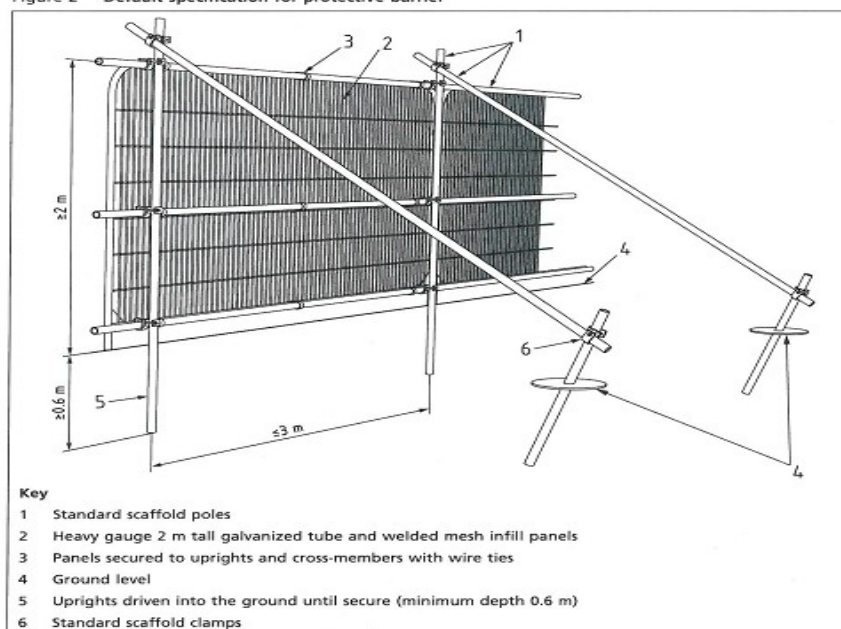
on retained hard surfacing or it is otherwise unfeasible to use ground pins, e.g. due to the presence of underground services, the stabilizer struts should be mounted on a block tray (Figure 3b).

**NOTE 1** Examples of configurations for steel mesh perimeter fencing systems are given in BS 1722-18.

**NOTE 2** It might be feasible on some sites to use temporary site office buildings as components of the tree protection barriers, provided these can be installed and removed without damaging the retained trees or their rooting environment.

6.2.2.4 All-weather notices should be attached to the barrier with words such as: "CONSTRUCTION EXCLUSION ZONE – NO ACCESS".

Figure 2 Default specification for protective barrier



### 3. Cascade chart for tree quality assessment.

Bought by Miss Sarah Smith, West Coast Network Services, on 14/11/2012 09:36 Latest version. Not to be distributed/networked. For multi-user access www.bsigroup.com/license © BSI

Table 1 Cascade chart for tree quality assessment

Category and definition	Criteria (including subcategories where appropriate)			Identification on plan
Trees unsuitable for retention (see Note)				
<b>Category U</b> Those in such a condition that they cannot realistically be retained as living trees in the context of the current land use for longer than 10 years	<ul style="list-style-type: none"><li>Trees that have a serious, irremediable, structural defect, such that their early loss is expected due to collapse, including those that will become unviable after removal of other category U trees (e.g. where, for whatever reason, the loss of companion shelter cannot be mitigated by pruning)</li><li>Trees that are dead or are showing signs of significant, immediate, and irreversible overall decline</li><li>Trees infected with pathogens of significance to the health and/or safety of other trees nearby, or very low quality trees suppressing adjacent trees of better quality</li></ul> <p><i>NOTE Category U trees can have existing or potential conservation value which it might be desirable to preserve; see 4.5.7.</i></p>			See Table 2
	1 Mainly arboricultural qualities	2 Mainly landscape qualities	3 Mainly cultural values, including conservation	
Trees to be considered for retention				
<b>Category A</b> Trees of high quality with an estimated remaining life expectancy of at least 40 years	Trees that are particularly good examples of their species, especially if rare or unusual; or those that are essential components of groups or formal or semi-formal arboricultural features (e.g. the dominant and/or principal trees within an avenue)	Trees, groups or woodlands of particular visual importance as arboricultural and/or landscape features	Trees, groups or woodlands of significant conservation, historical, commemorative or other value (e.g. veteran trees or wood-pasture)	See Table 2
<b>Category B</b> Trees of moderate quality with an estimated remaining life expectancy of at least 20 years	Trees that might be included in category A, but are downgraded because of impaired condition (e.g. presence of significant though remediable defects, including unsympathetic past management and storm damage), such that they are unlikely to be suitable for retention for beyond 40 years; or trees lacking the special quality necessary to merit the category A designation	Trees present in numbers, usually growing as groups or woodlands, such that they attract a higher collective rating than they might as individuals; or trees occurring as collectives but situated so as to make little visual contribution to the wider locality	Trees with material conservation or other cultural value	See Table 2
<b>Category C</b> Trees of low quality with an estimated remaining life expectancy of at least 10 years, or young trees with a stem diameter below 150 mm	Unremarkable trees of very limited merit or such impaired condition that they do not qualify in higher categories	Trees present in groups or woodlands, but without this conferring on them significantly greater collective landscape value; and/or trees offering low or only temporary/transient landscape benefits	Trees with no material conservation or other cultural value	See Table 2

Shropshire Council Natural Environment Development Guidance Note 7

Appendix 3: Arboricultural Site Inspection Form

<b>Arboricultural Site Inspection</b>			
Site: _____			
Application Ref: _____			
Developer: _____			
Site agent: _____			
Arboricultural consultant: _____			
Date of inspection: _____ LPA Tree Officer: _____, Shirehall, Shrewsbury			
Accompanied by: _____			
<b>Fencing / Ground Protection</b>			
In place / intact?	<input type="checkbox"/>	Information signs present?	<input type="checkbox"/>
Erected according to approved details?	<input type="checkbox"/>	Any evidence of breach?	<input type="checkbox"/>
Details, including action taken / required: _____			
_____			
<b>Construction Exclusion Zone</b>			
CEZ to approved dimensions?	<input type="checkbox"/>	Any evidence of tree damage?	<input type="checkbox"/>
Any evidence within the CEZ of:			
Excavations?	<input type="checkbox"/>	Changed soil levels?	<input type="checkbox"/>
Ground contamination?	<input type="checkbox"/>	Vehicle movements?	<input type="checkbox"/>
Storage of materials / equipment / waste?	<input type="checkbox"/>	Fires?	<input type="checkbox"/>
Details, including action taken / required: _____			
_____			
Any special works potentially damaging to trees proposed for coming building period? <input type="checkbox"/>			
Any amendments to proposed plans? <input type="checkbox"/>			
Details: _____			
_____			
Copied to: Site Manager <input type="checkbox"/> LPA tree officer <input type="checkbox"/>			
Site Agent <input type="checkbox"/> Site owner / Client <input type="checkbox"/>			

## **5. Keys.**

### **HEADINGS & ABBREVIATIONS**

**TREE NO.** REFERENCE NUMBER. REFER TO PLAN OR NUMBERED TAGS WHERE APPLICABLE

**AGE RANGE:** Y = YOUNG, SM = SEMI MATURE, EM = EARLY MATURE, M = MATURE, FM = FULLY MATURE, PM = POST MATURE

**DBH: STEM DIAMETER** – MEASURED AT 1.5 METRES

**CROWN SPREAD:** MEASURED DIAMETER OF CROWN AT 4 CARDINAL COMPASS POINTS

**VITALITY:** A MEASURE OF PHYSIOLOGICAL CONDITION. D = DEAD, F = FAIR, P = POOR, M = MODERATE, G = GOOD

**BS 5837 RETENTION CATEGORY:** RETENTION VALUE BASED ON TABLE 1 BS 5837 (2012)

**BS 5837 RPA RADIUS:** RADIUS FROM STEM TO THE LINE OF THE TREE PROTECTION AS SET OUT IN TABLE 2 OF THE STANDARD

**SULE:** SUITABLE LIFE EXPECTANCY IN YEARS (a subjective assessment of how long the tree may live).

7. Specifications for Terram Geotextile and Terram Geocell products to implement, Specification, Design and Installation Guide.

8. FIG.TWCLM

9. FIG.TCM

Keys in relation to condition.

Condition	
Excellent	Tree in excellent condition with good vitality and no defects present
Good	Tree in displaying good vigour, vitality, only very minor defects
Fair	Tree showing some signs of stress, minor defects present
Poor	Tree showing signs of major die back, major defects – intervention needed
Dead	Tree no longer alive
Work urgency (Priority)	
Very High	Urgent – Works required within 24 hours
High	Works required within 3 month
Moderate	Work required within 6 months
Low	Works required within 12 months
Very low	Low priority – within 1-3 years
No Work Required	No target

**Tree Species abbreviations for this report.**

<b>Common name</b>	<b>Abbreviation in report</b>	<b>Latin Name</b>
Sessile Oak	<i>Qp</i>	<i>Quercus patrea</i>
Ash	<i>Fe</i>	<i>Fraxinus exelsior</i>
Hawthorn	<i>Cm</i>	<i>Crataegus monogyna</i>
Blackthorn	<i>Ps</i>	<i>Prunus spinosa</i>
Alder	<i>Ag</i>	<i>Alnus glutinosa</i>
Willow	<i>S</i>	<i>Salix</i>
Elder	<i>Sm</i>	<i>Sambucus nigra</i>
Sycamore	<i>Ap</i>	<i>Acer pseudoplatanus</i>
Cherry	<i>Pa</i>	<i>Prunus avium</i>
Field maple	<i>Ac</i>	<i>Acer campestre</i>
Beech	<i>Ns</i>	<i>Northofagus sylvatica</i>
Dog rose	<i>Ra</i>	<i>Rosa canina</i>
Holly	<i>Ia</i>	<i>Ilex aquifolium</i>
Hazel	<i>Ca</i>	<i>Corylus avellana</i>
Norway maple	<i>Apf</i>	<i>Acer platanoides</i>
Field maple	<i>Ac</i>	<i>Acer campestre</i>
Privet	<i>Lo</i>	<i>Ligustrum ovalifolium</i>
Eucalyptus	<i>E</i>	<i>Eucalypteae</i>
Hornbeam	<i>B</i>	<i>Betulaceae</i>
Elm	<i>U</i>	<i>Ulmus</i>
Scots Pine	<i>Ps</i>	<i>Pinus sylvatica</i>
Monterey Pine	<i>Pr</i>	<i>Pinus radiata</i>
Corsica pine	<i>Pn</i>	<i>Pinus Nigra</i>
Alder	<i>Ag</i>	<i>Alnus glutinosa</i>
Elm	<i>U</i>	<i>Ulmus</i>
Birch	<i>Bp</i>	<i>Betula spp's</i>
Willow spp's	<i>S</i>	<i>Salix</i>
Yew	<i>Tb</i>	<i>Taxus bacata</i>
Momkwy puzzle	<i>Aa</i>	<i>Araucaria araucanaAa</i>
Lawsons Cypress	<i>Cl</i>	<i>Chamaecyparis lawsoniana</i>
Red oak	<i>Qr</i>	<i>Quercus rubra</i>
Weeping willow	<i>Sb</i>	<i>Salix babylonica</i>
Weeping silver pear	<i>Psp</i>	<i>Pyrus salicifolia 'Pendula'</i>
Black Poplar	<i>Pn</i>	<i>Populus nigra</i>
Holm oak	<i>Qi</i>	<i>Quercus ilex</i>

## **6. Glossary.**

### **Tree Number**

Refers to the tree as numerically tagged on site. Tags are to be place in visual position at eye level on surveyed trees.

### **Species**

Common and vernacular name of the tree – Vernacular- Latin names displayed in small italics.

### **Age**

The appearance of at what stage of life the tree may be in (mature, young, etc.)

### **DBH**

Diameter at Breast Height in centimetres.

### **Height**

Approximate height of the tree from base to the tips of the crown.

### **Deadwood to be Removed**

This survey has been based on removing any deadwood of 50mm diameter and above from the trees surveyed to make them safe by the footpath, and property.

### **Vitality**

The general vitality of the tree (poor, Fair, good, excellent), including disease and pests that may prove of detriment to the health, and longevity of the tree.

### **General Condition**

Consider structural condition in relation to vitality, including pest and diseases.



### **Comments and Recommendations**

Recommend tree work to reduce risks to an acceptable level during a pre-determined inspection period. Such recommendations will be made to procure a trees vitality and longevity as well as future safety.

### **Priority.**

Trees given a priority should have the recommendations carried out within the time-scales assigned. Denoted by the attached key.

### **av**

Average (Diameter in breast height in cm or height in meters).

### **RPA**

Root Protection Area.

### **RZ**

Rooting Zone.

### **RPA**

Root Protection Area.