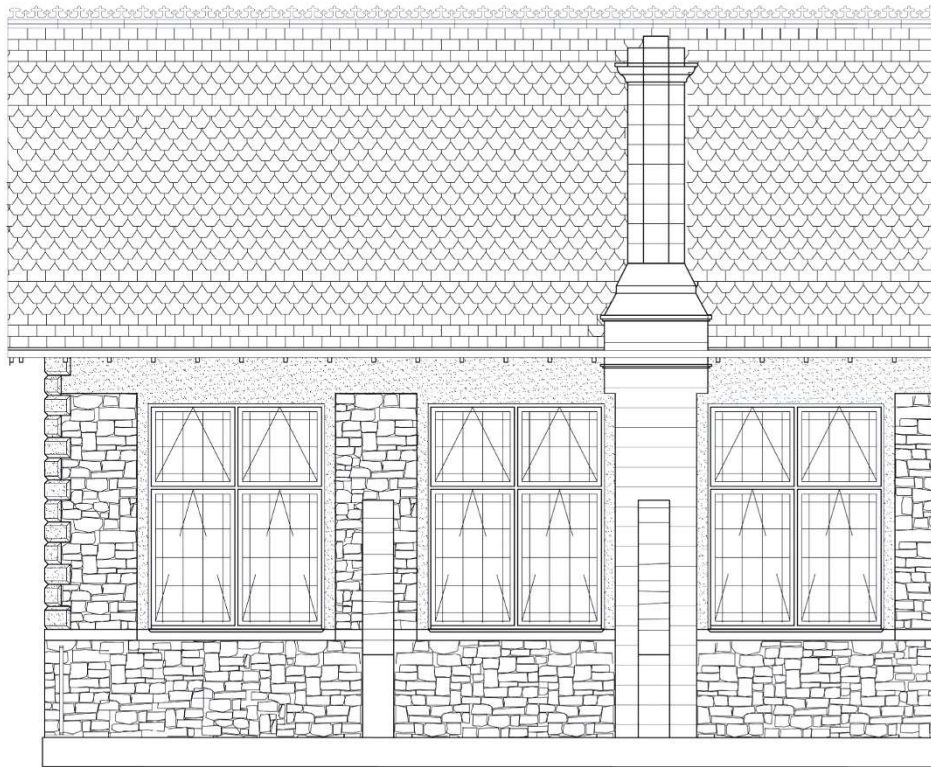
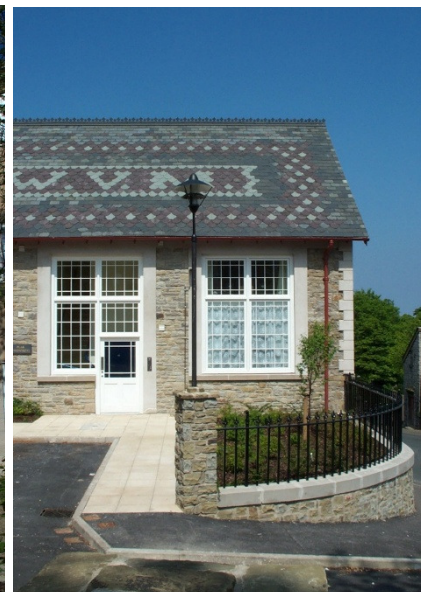




CASE STUDY: CONSERVATION
PLAS GWENFREWI





Conservation and Restoration

The original buildings were rebuilt as far as possible using recycled materials from the site. The school building was rebuilt in local stone that had been sourced from a local architectural salvage yard. Bands of smooth render surround the windows, which were replaced with single glazed windows designed to identically mimic the original windows.

Second hand welsh slates were sourced from local companies and unify the existing school building and the new build extension. Old photographs were sourced of the original polychromatic slate roof to the school building, and the new roof was painstakingly designed using three slate colours to match.

Whilst the building itself was not listed, the main feature of the terraced area is a 3m tall statue of Jesus which is a Grade 2 listed monument. After many years of neglect the cast-iron statue with a finish in bronze was restored to its original form.

Sustainability Overview

- Re-use of a redundant building
- Regeneration of an urban site with an inventive re-use of existing buildings
- Recycling of building materials
- Use of local skilled tradesmen, with traditional skills
- Provision of low-cost low maintenance housing for the local community
- Both the original school building and the new-build extension were insulated to a high standard to reduce heat loss through the building fabric

CASE STUDY: CONSERVATION

PLAS GWENFREWI

Name of Building

Plas Gwenfrewi Affordable
Apartments

Date Completed

March 2004

Project Cost

£980,000

Building Type

Residential

Location

Holywell, Flintshire

Client

Wales and West Housing Association

Main Contractor

R. L. Davies & Son Ltd.

Awards

Civic Trust Mention 2005

'Building For Life: Wales' website—
exemplar housing project selected by
Design Commission for Wales

Building Overview

Ainsley Gommon Architects were involved in this key restoration project within Holywell that was partially funded by the Holywell Townscape Heritage Initiative, a scheme supporting the phased restoration of landmark buildings within the Holywell Conservation Area.

The Plas Gwenfrewi scheme involved the conversion and new build extension to the former St Winefrides Convent School to create 14 affordable apartments for Wales and West Housing Association. The original 19th Century school building was in a semi-derelict condition and had become unsafe. The majority of the building was demolished with the exception of the main façade to the street, and then rebuilt to an identical form. The interior of the building was adapted to accommodate eight bespoke flats designed to Lifetime Home Standards.

A contemporary new build extension was designed as a modern intervention and provides a further six apartments. The new building is finished with a polymer render to complement the original building with areas of cedar boarding providing visual interest.

Conservation specialists were consulted throughout and skilled tradesmen using traditional approaches were used to ensure the restoration project was as successful as possible.

The project also included the restoration of a 3m tall cast iron statue which is a Grade 2 listed monument and forms the focal point of the scheme.

